



DESIGN & CONSTRUCTION GROUP
THE GOVERNOR NELSON A. ROCKEFELLER
EMPIRE STATE PLAZA
ALBANY, NY 12242

ADDENDUM NO. 2 TO PROJECT NO. 44894

**ELECTRICAL WORK
PROVIDE FIRE DECEPTION SYSTEM
SWAN STREET BUILDING
EMPIRE STATE PLAZA
ALBANY, NY 12242**

April 19, 2024

NOTE: This Addendum forms a part of the Contract Documents. Insert it in the Project Manual. Acknowledge receipt of this Addendum in the space provided on the Bid Form.

BIDDING REQUIREMENTS

1. DOCUMENT 001114 ADVERTISEMENT FOR BIDS: The last date for receipt of bids is changed from Wednesday, April 24, 2024, to Wednesday, May 1, 2024.

SPECIFICATIONS

2. Page 283102 – 14, ADD Article 1.08 to read

“1.08 ALLOWANCES

- A. An allowance for the following portions of the Work of this Section is included in Section 012100:
 1. Services of the Company Field Advisor as described in QUALITY ASSURANCE.
 2. All items listed in SUBMITTALS.
 3. Engineering and reprogramming associated with the installation of the new equipment and updating existing information.
 4. All products listed in PART 2 of this Section except:
 - a. Protective devices.
 - b. Terminal strip cabinets.
 - c. Conductors and cable.
 - d. Signs, labels, markers, and nameplates.
 - e. Labor for installation of the products is not included in the allowance and shall be included in the contract sum.
 5. Spare parts listed in Part 1 of this Section except protective devices.
 6. Honeywell Contact: John Gardiner, M: 518-365-1555; E: john.gardiner@honeywell.com”

DRAWINGS

3. Drawing No. G-002:
 - a. ADD General Note #31 to read as follows:
“31. PROVIDE DROP CEILING TILES WHERE FIRE ALARM DEVICES ARE REMOVED AND/OR CEILING TILES ARE DAMAGED DURING THE COURSE OF THE PROJECT.”

4. Revised Drawing:
 - a. Drawing No. FA-601, noted “REVISED DRAWING 4/19/2024” accompanies this Addendum and supersedes the same numbered originally issued drawing.

5. Reference Drawings:
 - a. Drawing Nos. REF-1, REF-2, REF-3, and REF-4, noted “ADDENDUM DRAWING 4/19/2024” accompany this Addendum and is provided for reference only.

END OF ADDENDUM

Brady Sherlock, P.E.
Director, Division of Design
Design & Construction



GHD Consulting Services Inc.

WARNING:
THE ALTERATION OF THIS MATERIAL IN ANY WAY, UNLESS DONE UNDER THE DIRECTION OF A COMPARABLE PROFESSIONAL, I.E. ARCHITECT FOR AN ARCHITECT, ENGINEER FOR AN ENGINEER OR LANDSCAPE ARCHITECT FOR A LANDSCAPE ARCHITECT, IS A VIOLATION OF THE NEW YORK STATE EDUCATION LAW AND/OR REGULATIONS AND IS A CLASS 'A' MISDEMEANOR.



REGISTRATION EXPIRES:
JUNE 30, 2026

CONTRACT: **ELECTRICAL**

TITLE: PROVIDE FIRE DETECTION SYSTEM

LOCATION: SWAN STREET BUILDING
EMPIRE STATE PLAZA
ALBANY, NY

CLIENT: OGS REAL PROPERTY MANAGEMENT

| MARK | DATE | DESCRIPTION |
|------|------------|---------------------|
| C | 04/19/2024 | ADDENDUM #2 |
| B | 02/15/2024 | 100% BACKCHECK SUB. |
| A | 06/16/2023 | 100% SUBMISSION |

PROJECT NUMBER: **44894-E**

DESIGNED BY: BGRTK

DRAWN BY: BGRTK

FIELD CHECK:

APPROVED:

SHEET TITLE: **RISER DIAGRAM**

DRAWING NUMBER: **FA-601**

SHEET 79 OF 82

DRAWING GENERAL NOTES

- NOT ALL DEVICES AND EQUIPMENT SHOWN. REFER TO PLAN DRAWINGS FOR EXACT QUANTITIES OF DEVICES AND EQUIPMENT TO PROVIDE.
- FOR EACH CONTROL UNIT ENCLOSURE AND NAP POWER SUPPLY, PROVIDE A 120 VAC, 20 AMP, 1 POLE CIRCUIT INCLUDING 200 FEET OF TWO NO. 12 AWG, THIRTYTHREE, 600 VAC INSULATED CONDUCTORS, WITH ONE NO. 12 AWG EQUIPMENT GROUND. PROVIDE SURGE PROTECTION DEVICE ON EACH CIRCUIT. COORDINATE WITH DIRECTOR'S REPRESENTATIVE FOR CONNECTION TO EXISTING 120 VAC DISTRIBUTION PANEL. PROVIDE COMPATIBLE 20 AMP CIRCUIT BREAKER TO MATCH DISTRIBUTION PANEL SPECIFICATIONS. WIRING SHALL BE AS FOLLOWS:
 - PROVIDE FREE AIR PLENUM IN AREAS ABOVE ACCESSIBLE CONCEALED FINISHED CEILINGS.
 - IN EXPOSED FINISHED AREAS PROVIDE IN SURFACE METAL RACEWAY.
 - IN UNFINISHED AREAS, PROVIDE IN EMT CONDUIT, 3/4 INCH TRADE SIZE MINIMUM. RISER EMT CONDUIT SHALL BE 2 INCH TRADE SIZE MINIMUM.

DRAWING KEYNOTES

- PROVIDE AMP9 TO INDIVIDUAL SPEAKER CIRCUITS FOR EACH GROUP OF ELEVATORS.
- PROVIDE CI CABLE TO NETWORK ICUS TO ICUS AND ICUS TO FATC'S. SEE DETAIL 3 CONDUCTOR/WIRE SCHEDULE FOR WIRE TYPE.

CONDUCTOR/WIRE SCHEDULE

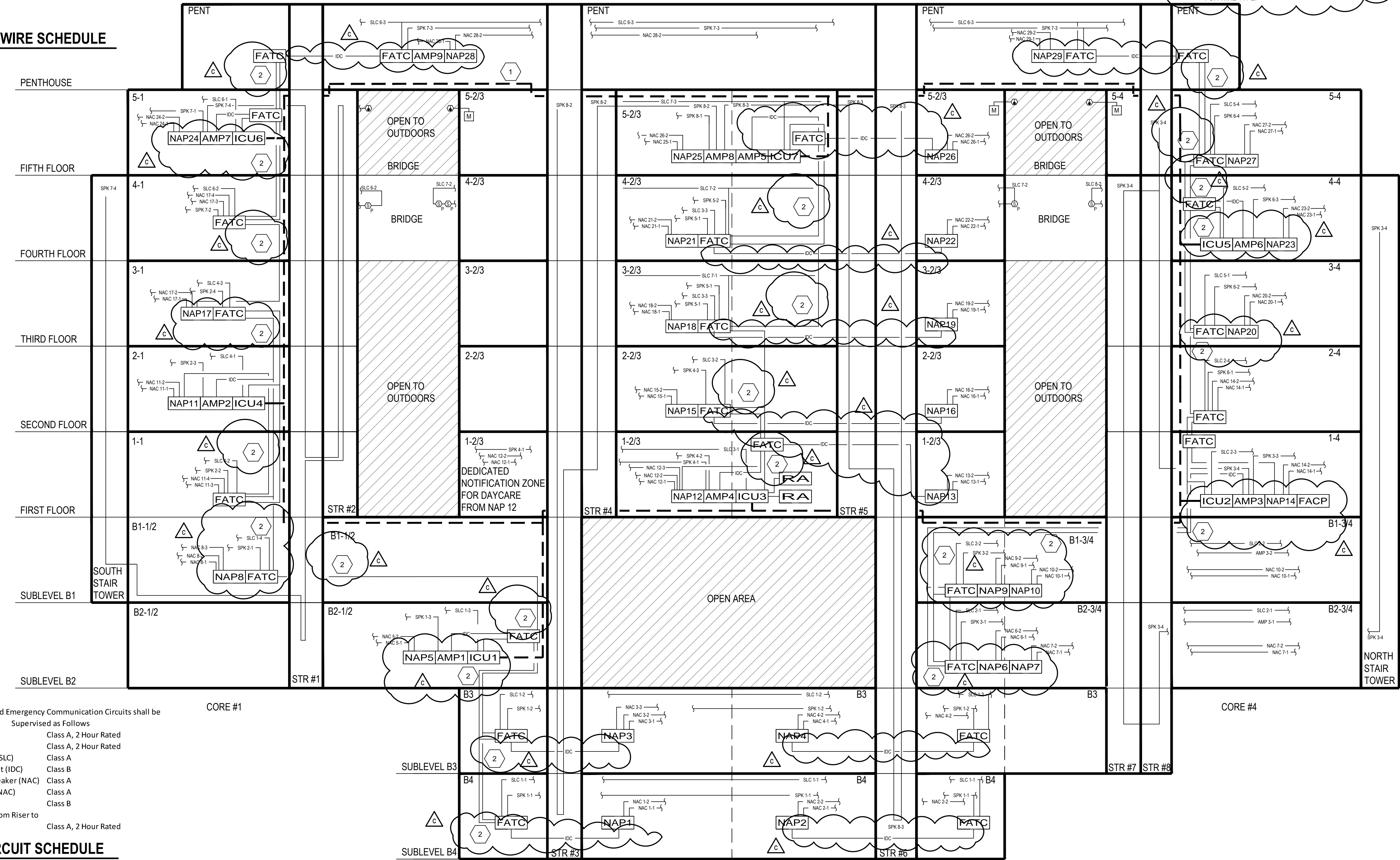
| CIRCUIT TYPE | NUMBER AND TYPE OF CONDUCTOR |
|--|---|
| IDC | 2-#14 FPLP WIRE |
| NAC STROBE | 2-#12 FPLP WIRE |
| NAC SPEAKER | 2-#18 TWISTED (SHIELDED) PAIR FPLP WIRE |
| 24 VDC AUX POWER | 2-#12 FPLP WIRE |
| NETWORK TO FCS | TYPE LAN-O OPTICAL FIBER |
| NETWORK ICU'S TO ICU'S & ICU'S TO FATC'S | CIRCUIT INTEGRITY (CI) WIRE, 2-#16 TWISTED PAIR UNSHIELDED WIRE |
| SLC | 2-#16 TWISTED PAIR UNSHIELDED FPL WIRE |
| REMOTE ANNUNCIATOR | 1-#18 TWISTED SHIELDED PAIR 2-#12 24 VDC AUX POWER |

CONDUIT SCHEDULE

| CONDUIT TYPE | LOCATION CONDUIT UTILIZED |
|----------------------------------|----------------------------------|
| RIGID GALVANIZED STEEL (RGS) | VERTICAL RISERS |
| ELECTRICAL METALLIC TUBING (EMT) | UNFINISHED AREAS |
| SURFACE RACEWAY | FINISHED AREAS |
| NO CONDUIT | ABOVE CEILINGS IN FINISHED AREAS |

4 CONDUIT SCHEDULE
SCALE: N.T.S.

3 CONDUCTOR/WIRE SCHEDULE
SCALE: N.T.S.



All Fire Alarm and Emergency Communication Circuits shall be Supervised as Follows

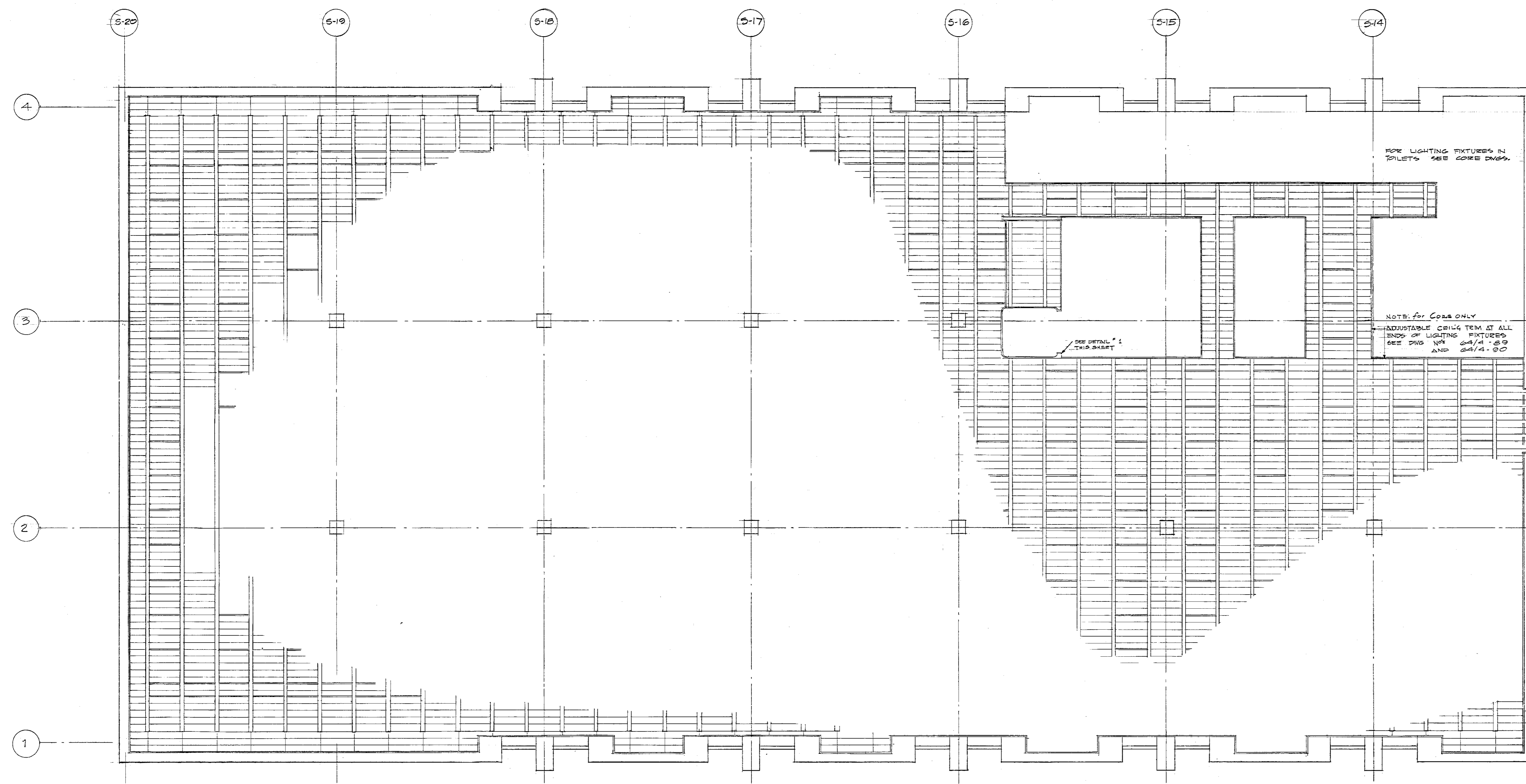
| | |
|---|-----------------------|
| Network SLC | Class A, 2 Hour Rated |
| Low Level Voice Buss | Class A, 2 Hour Rated |
| Signaling Line Circuit (SLC) | Class A |
| Initiating Device Circuit (IDC) | Class B |
| Audio Notification Speaker (NAC) | Class A |
| Visual Strobe Circuit (NAC) | Class A |
| Control | Class B |
| All Risers (including from Riser to panels on floors) | Class A, 2 Hour Rated |

2 CIRCUIT SCHEDULE
SCALE: N.T.S.

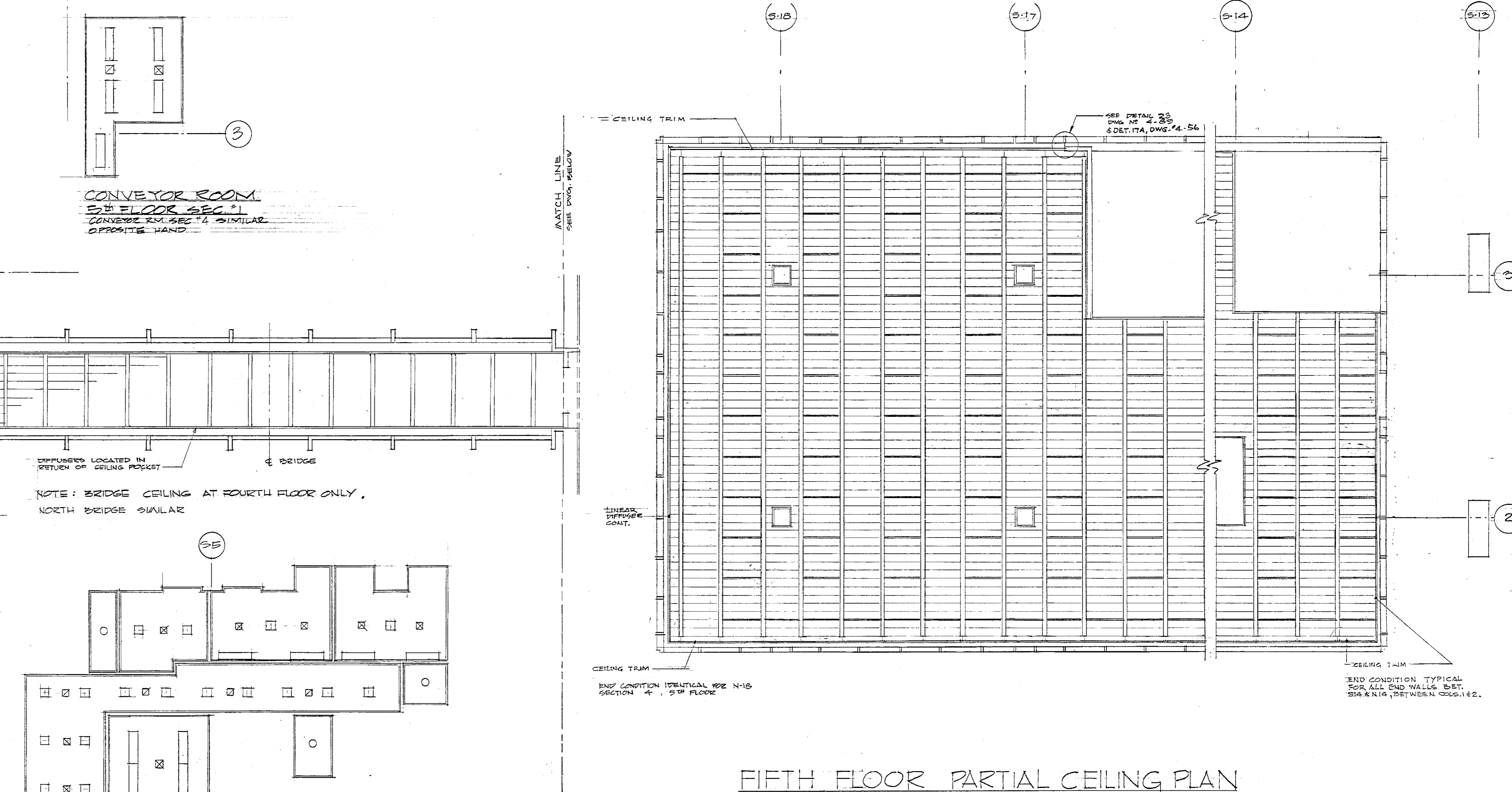
1 RISER DIAGRAM
SCALE: N.T.S.

REVISED DRAWING 04/19/2024

DRAWING IS PROVIDED FOR REFERENCE ONLY. WORK SHOWN ON THIS DRAWING IS NOT PART OF THE SCOPE OF THIS CONTRACT. CURRENT CONDITIONS MAY NOT EXACTLY REFLECT THOSE DEPICTED HERE.

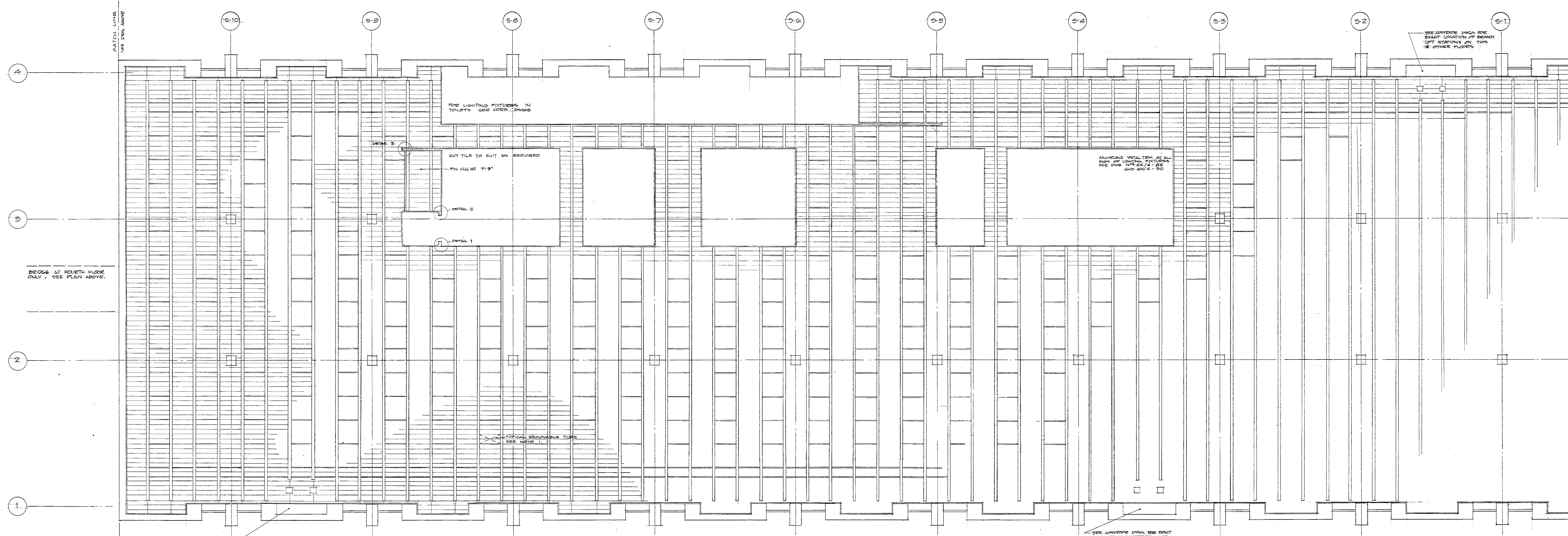


TYPICAL FLOOR - SECTION 1 (SECTION 4 SHALVE OUT OFF HAND)

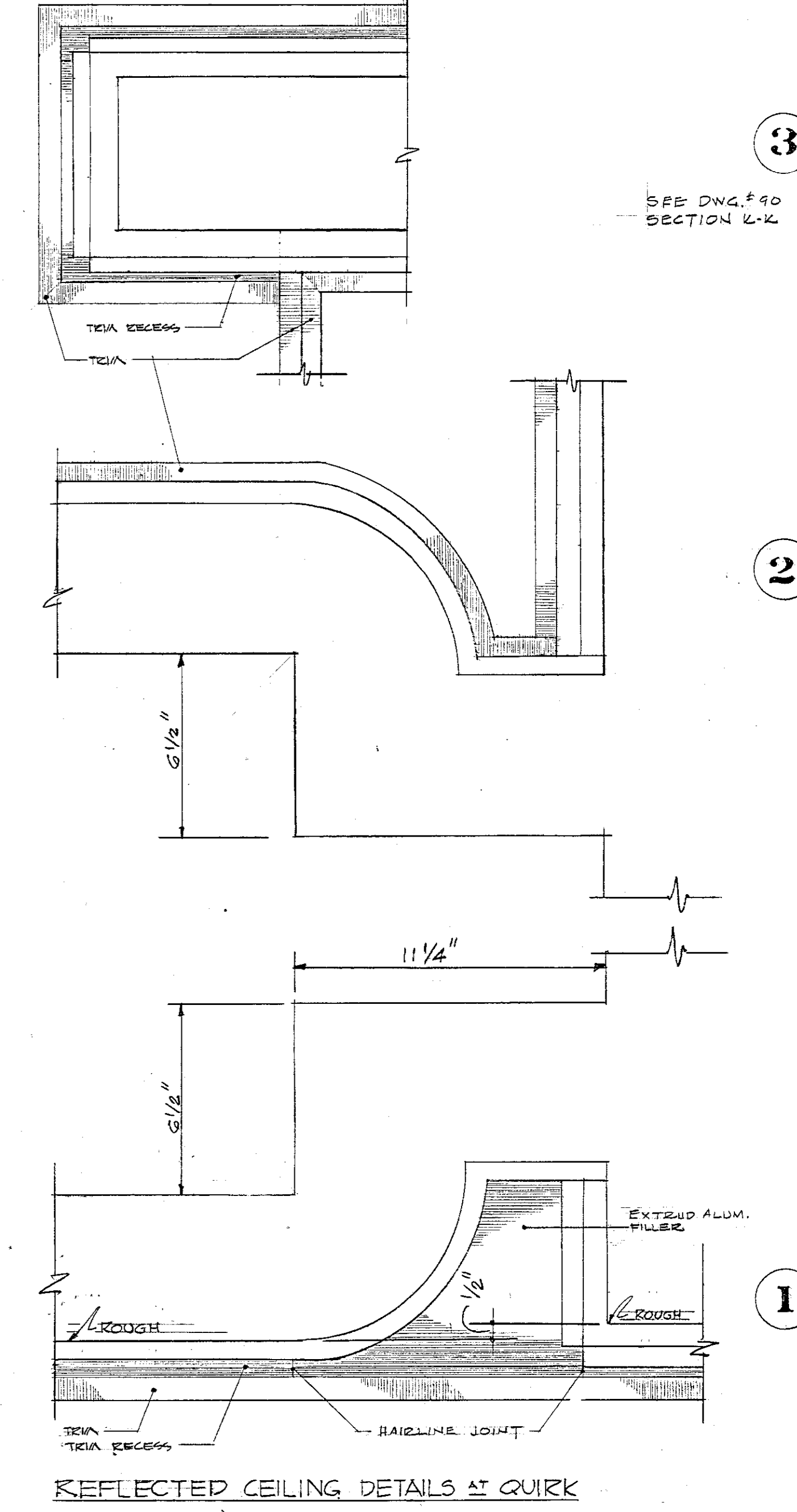


FIFTH FLOOR PARTIAL CEILING PLAN

4TH FLOOR MEDICAL ROOMS SECTION



TYPICAL FLOOR - SECTION 2 (SECTION 2 SHALVE OUT OFF HAND)



REFLECTED CEILING DETAILS AT QUIRK

REFERENCE SHOP DWG'S
DAVIS ACoustICAL
DWG. 10-10-TYP. REFLECTED CEILING PLAN - SUB-LEVEL 3, SECTION 2, 3 & 4
10-11-TYP. REFLECTED CEILING PLAN - SUB-LEVEL 4, SECTION 3 & 4
10-12-TYP. REFLECTED CEILING PLAN - SUB-LEVEL 2, SECTION 3 & 4

REFERENCE SHOP DWG'S
DAVIS ACoustICAL CORP.
DWG. 10-10-TYP. REFLECTED CEILING PLAN - SECT. 2, 3 & 4
10-11-TYP. REFLECTED CEILING PLAN - SECT. 1, 2 & 3
10-12-TYP. REFLECTED CEILING PLAN - SECT. 3 & 4
10-13-TYP. REFLECTED CEILING PLAN - ALL SECTIONS
10-14-TYP. REFLECTED CEILING PLAN - SUB-LEVEL 1, SECTION 3 & 4

AS-BUILT
NOTE:
FOR EXISTING WORK N.I.C. SEE FOUNDATION CONTRACT REFERENCE DRAWINGS.

26

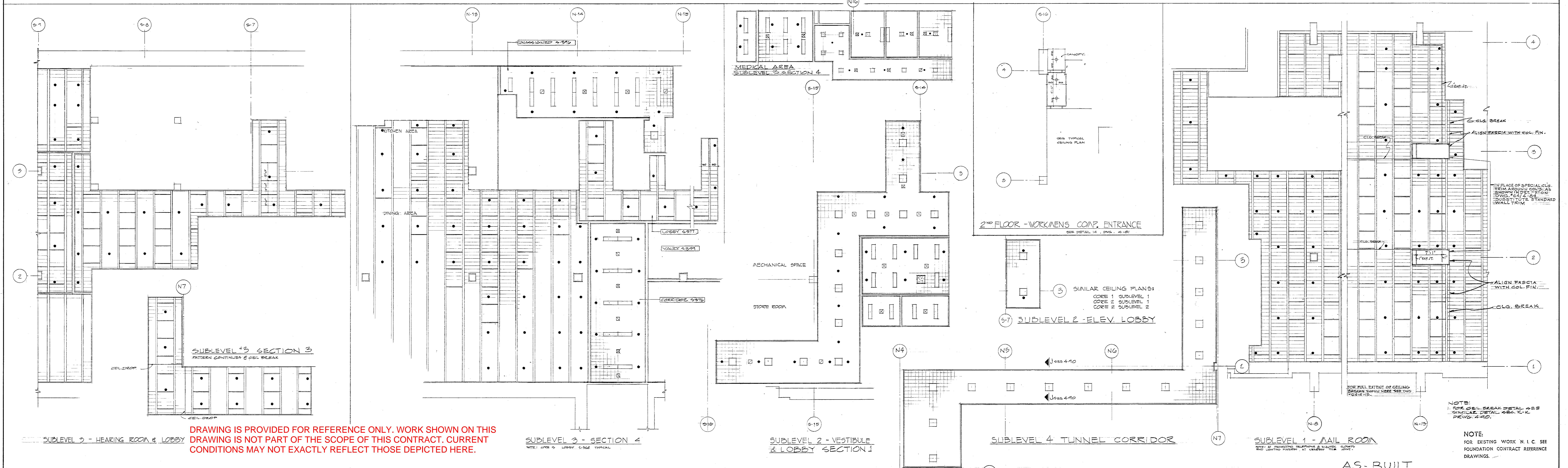
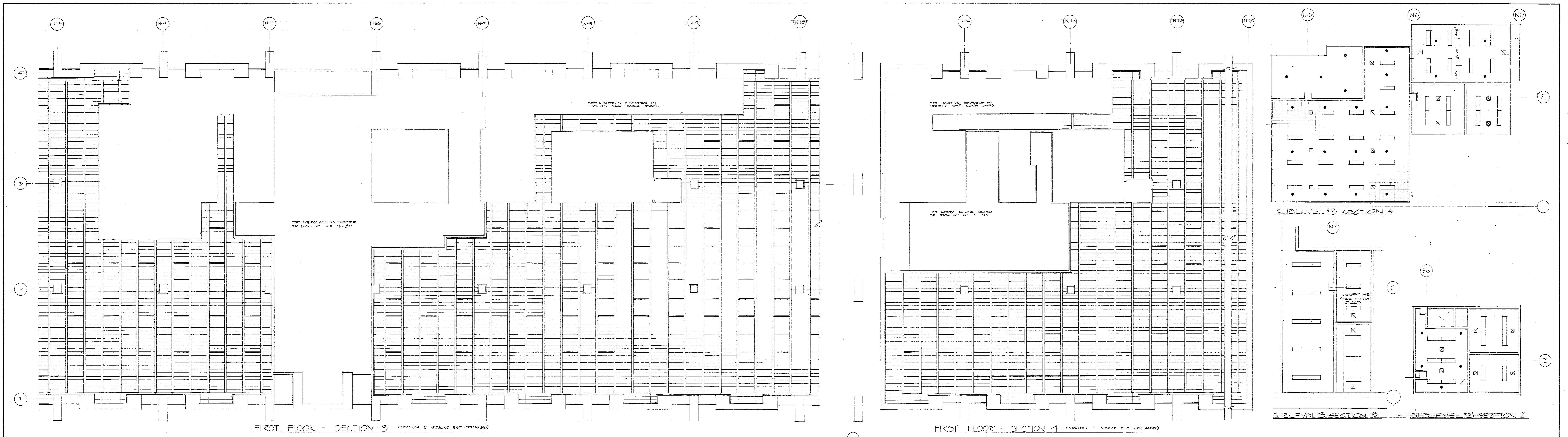
ALBANY SOUTH MALL PROJECT
SWAN STREET BUILDING

ADDEDNDUM DRAWING 4/19/24
REF-1

| REV | DATE | ISSUED TO | REV | DATE | ISSUED TO |
|-----|------|-----------|-----|------|-----------|
| | | | | | |

ALBANY, NEW YORK
ALBANY SOUTH MALL PROJECT
SWAN STREET BUILDING

CONSTRUCTION - ARCHITECTURAL
TYPICAL REFLECTED CEILING PLANS
PARTIAL 4TH & 5TH FLOOR CLG PLANS
19567-C
MARCH 21, 1969
STATE OF NEW YORK
OFFICE OF GENERAL SERVICES
COMMISSIONER
CIVIL SERVICE
DEPARTMENT OF PUBLIC WORKS
DIVISION OF ARCHITECTURE
644-87



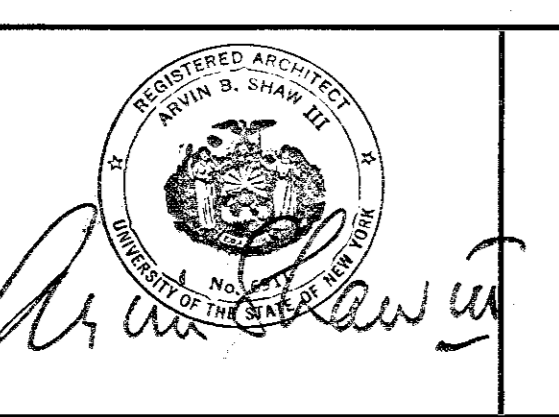
DRAWING IS PROVIDED FOR REFERENCE ONLY. WORK SHOWN ON THIS DRAWING IS NOT PART OF THE SCOPE OF THIS CONTRACT. CURRENT CONDITIONS MAY NOT EXACTLY REFLECT THOSE DEPICTED HERE.

NOTE:
1. FOR CELL BREAK DETAIL SEE SHALOE DETAIL 666.10-C. PREV. 2-60.
NOTE:
FOR EXISTING WORK N.I.C. SEE FOUNDATION CONTRACT REFERENCE DRAWINGS.

ARMSTRONG & WHITNEY
STRUCTURAL ENGINEERS
111 EIGHTH AVENUE NEW YORK 17, N.Y.

SYSA MENESSIER
STRUCTURAL ENGINEERS
144 EAST 57TH STREET NEW YORK 18, N.Y.

MULLER, RUTLEDGE, WILSON & JOHNSON
CONSULTING AND INVESTMENT FOUNDATIONS
415 MADISON AVENUE NEW YORK 17, N.Y.



CARSON, LUNDIN & SHAW
ARCHITECTS
425 PARK AVENUE NEW YORK 22, N.Y.

ADDEDNDUM DRAWING 4/19/24 REF-2

| REV | DATE | ISSUED TO | REV | DATE | ISSUED TO |
|-----|------|-----------|-----|------|-----------|
| | | | | | |
| | | | | | |
| | | | | | |

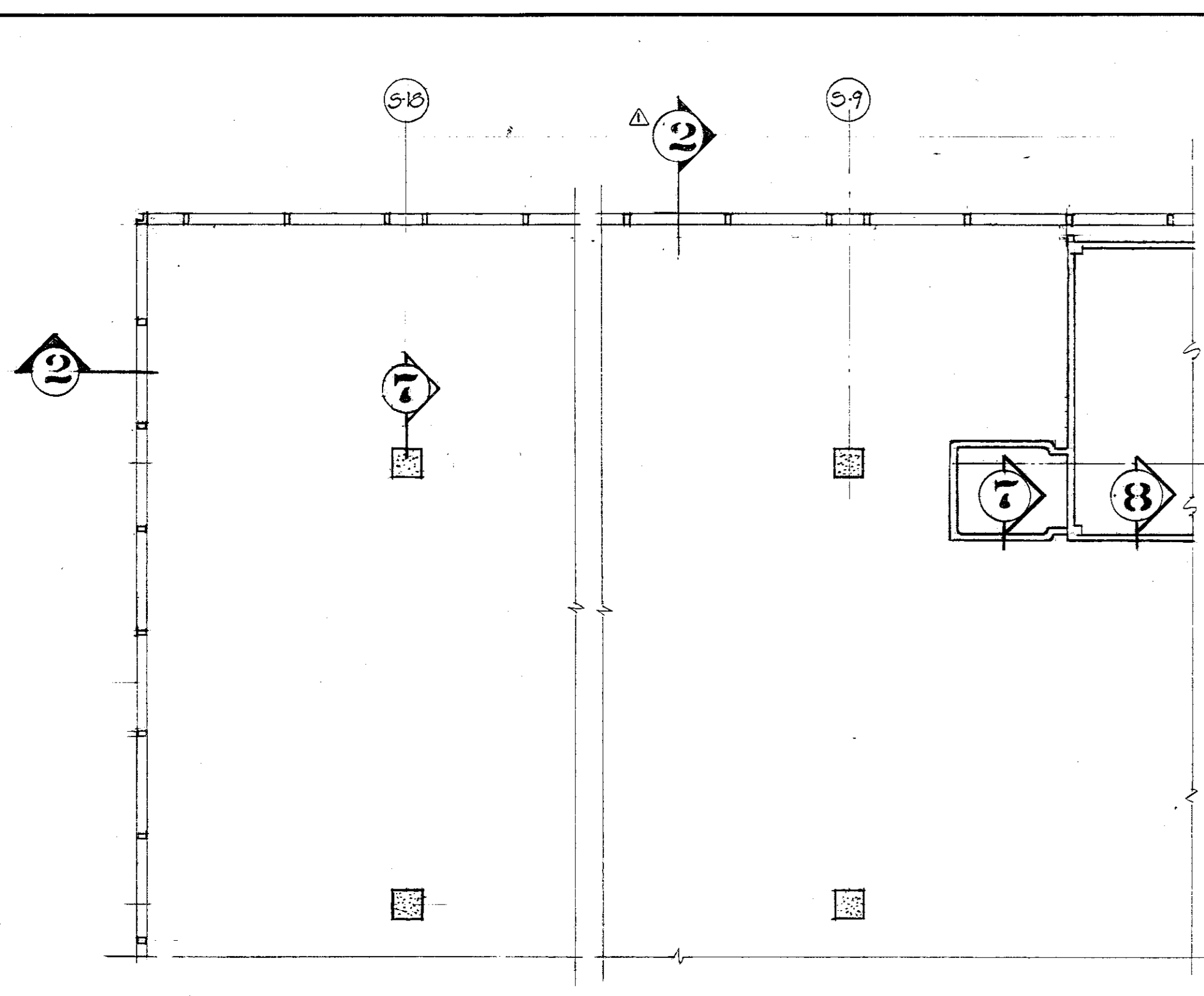
ALBANY, NEW YORK
ALBANY SOUTH MALL PROJECT
SWAN STREET BUILDING

| DATE | BY | DESCRIPTION | DATE | BY | DESCRIPTION |
|----------|----|-------------------------------|----------|----|-------------|
| 1956.7 | | CONSTRUCTION-ARCHITECTURAL | 1956.7 | | |
| 1956.7.C | | MISC. REFLECTED CEILING PLANS | 1956.7.C | | |
| 1956.7.C | | | 1956.7.C | | |

STATE OF NEW YORK
OFFICE OF GENERAL SERVICES
CIVIL ENGINEER - COMMISSIONER
DEPARTMENT OF PUBLIC WORKS
DIVISION OF ARCHITECTURE

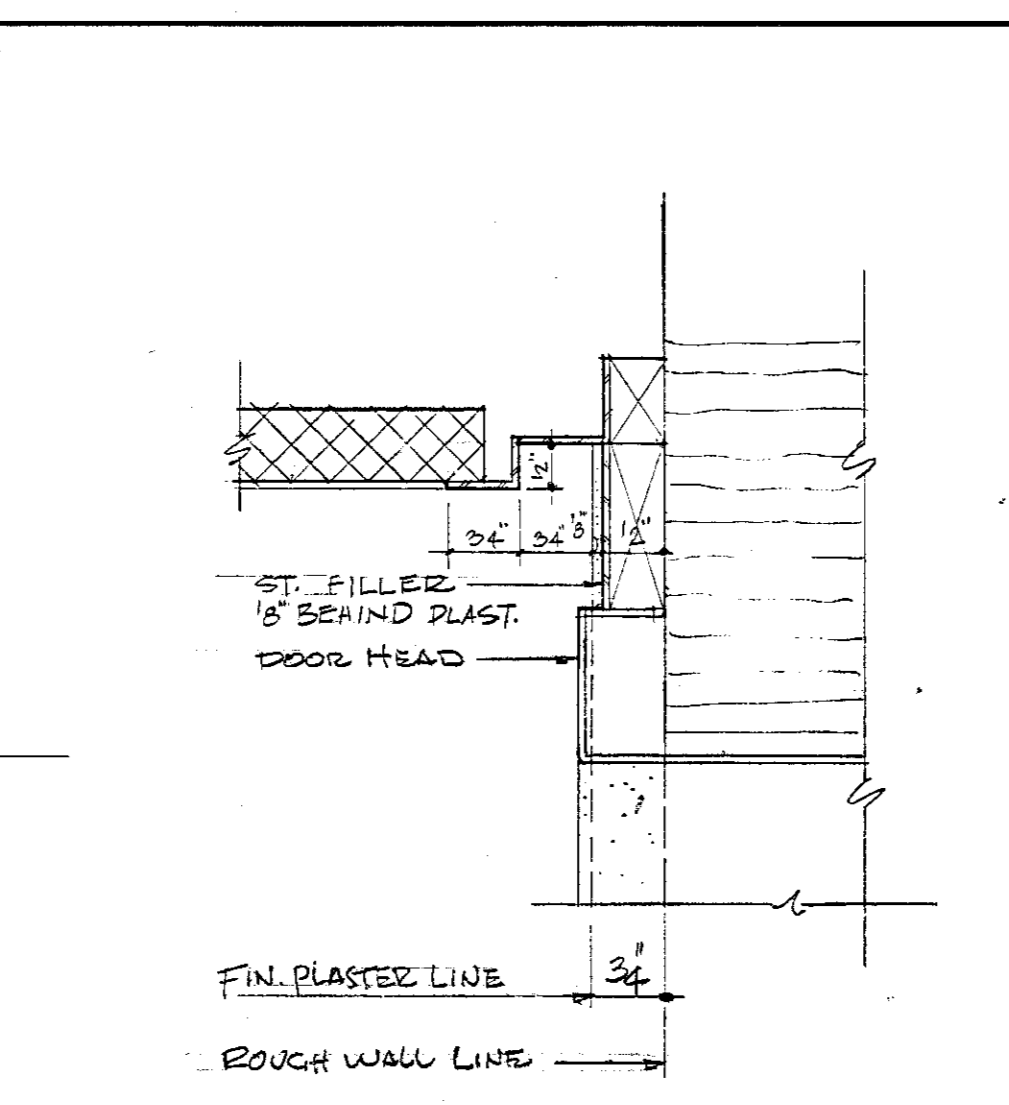
J. E. MURPHY, SUPERINTENDENT
C. S. MARSH, STATE ARCHITECT

64/4-88

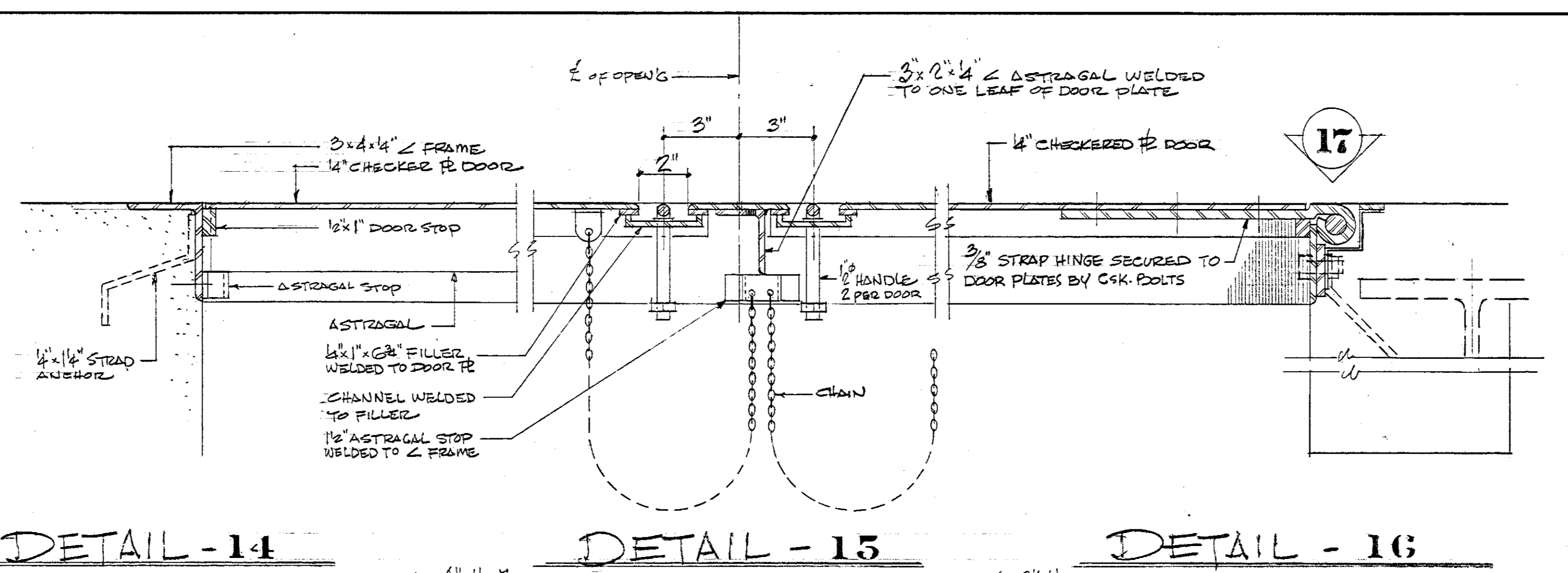


1 TYPICAL 5th FL RFFL CLG KEY PLAN
FOR LIGHTING & DIFFUSER LAYOUT. SEE DWG. 4-3. SCALE 1/8" = 1'-0"

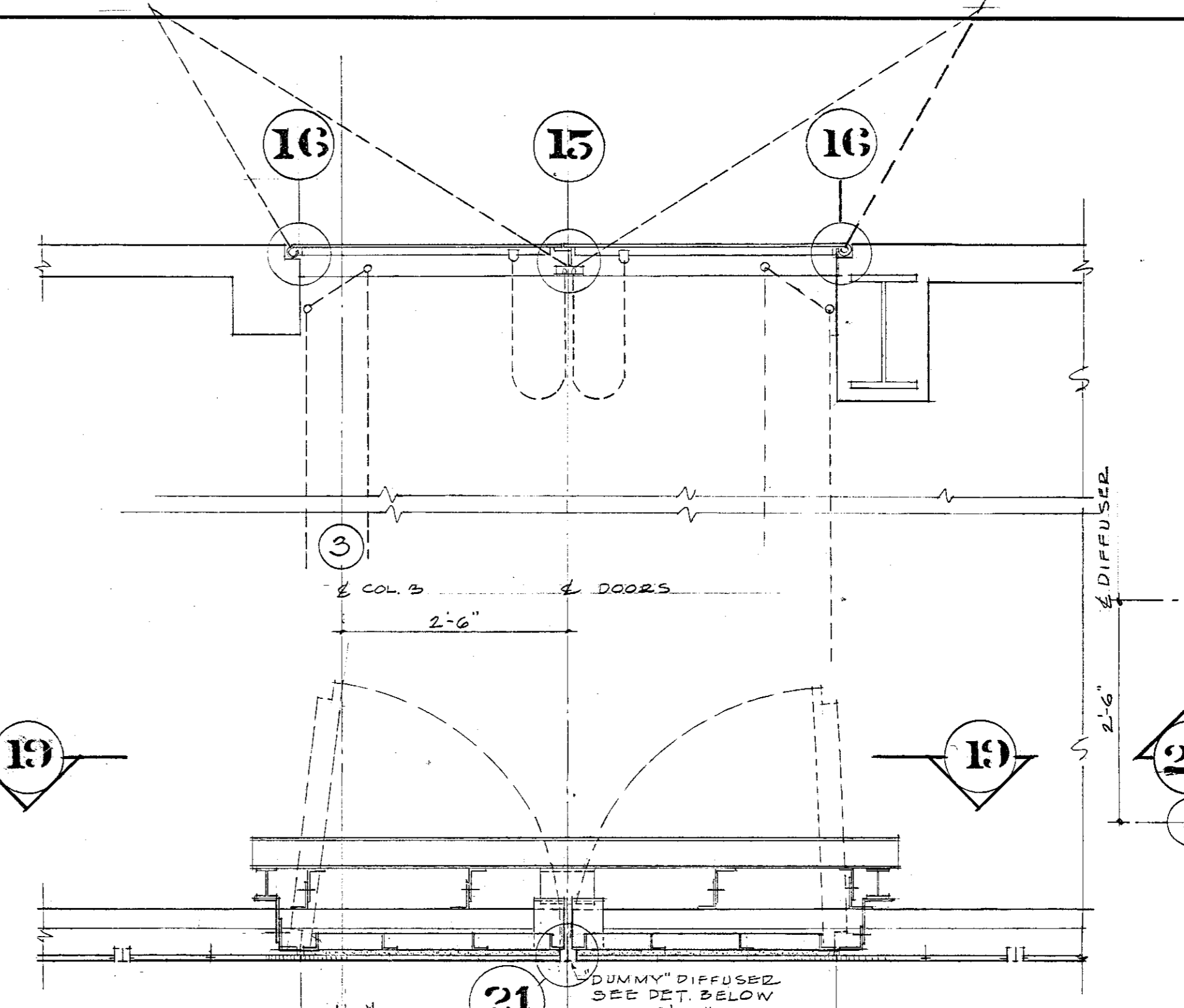
DRAWING IS PROVIDED FOR REFERENCE ONLY. WORK SHOWN ON THIS DRAWING IS NOT PART OF THE SCOPE OF THIS CONTRACT. CURRENT CONDITIONS MAY NOT EXACTLY REFLECT THOSE DEPICTED HERE.



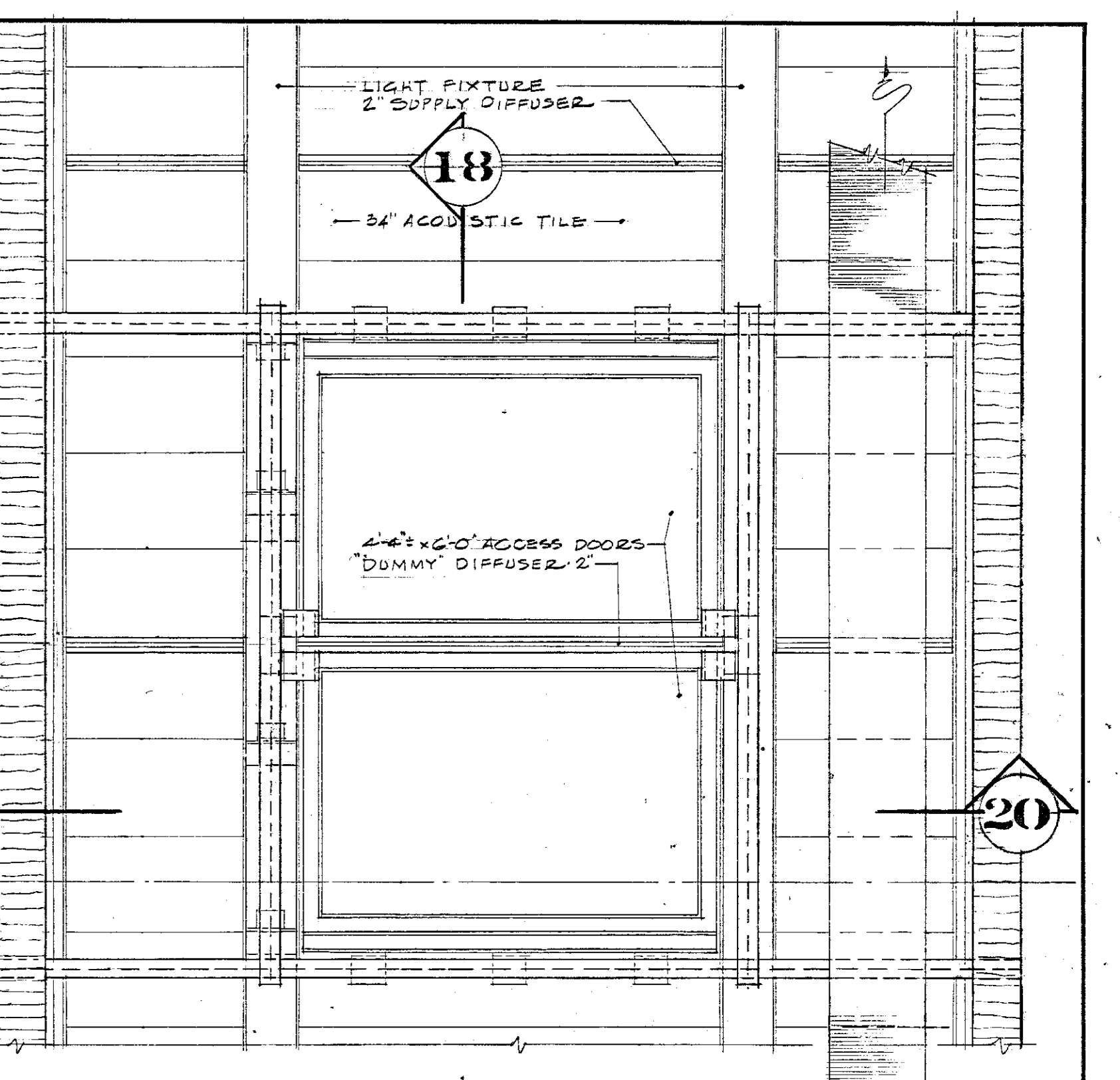
DETAIL - 13
(FOR DOOR DETAIL SEE DWG. 4-49 DET. 45)
SCALE 1/4" = 1'-0"



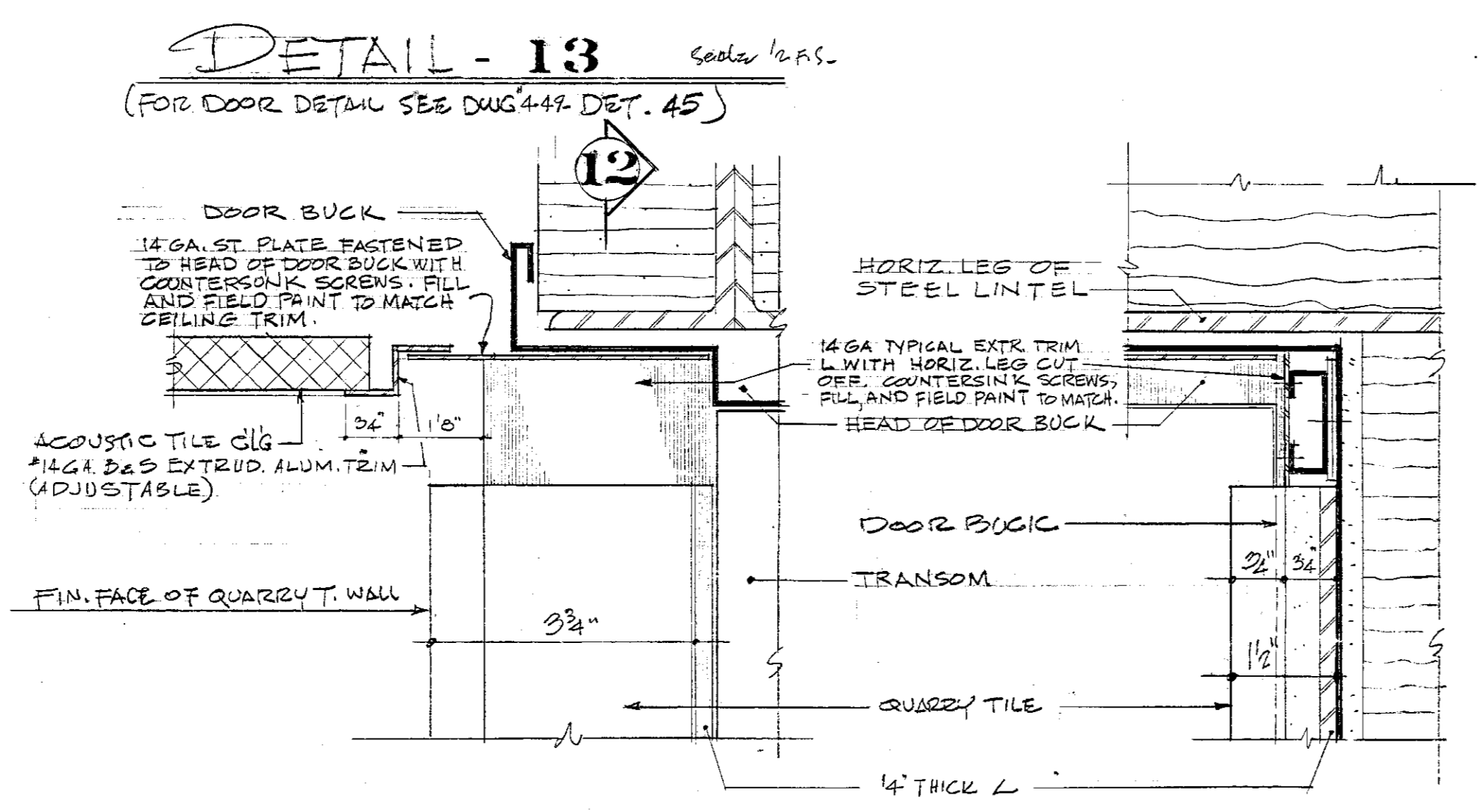
DETAIL - 14
DETAIL - 15
DETAIL - 16
SCALE 3/8" = 1'-0"



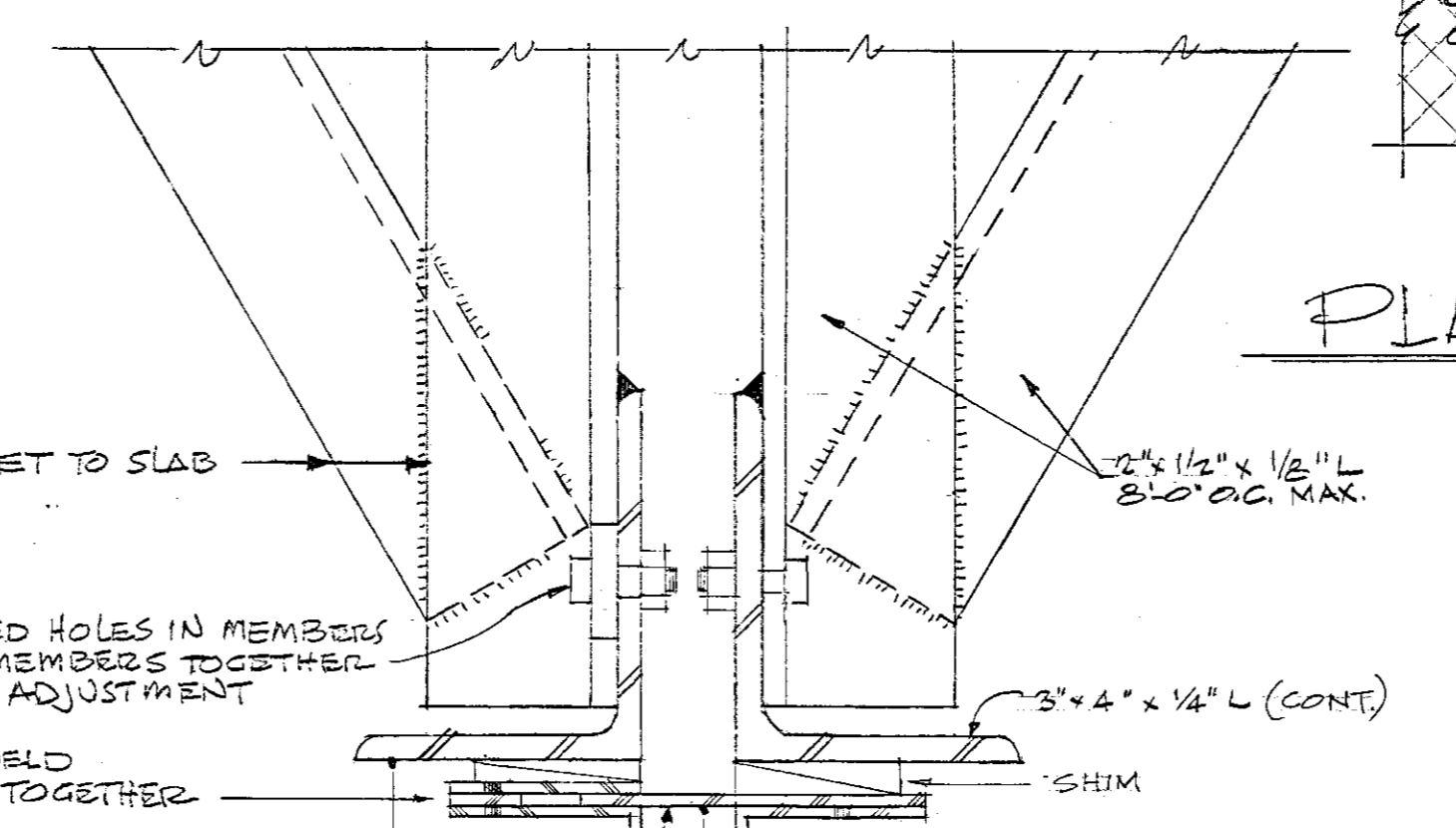
18 EAST-WEST SECTION THRU TRAP DOORS
SCALE 1/8" = 1'-0"



19 PLAN OF TRAP DOOR AT CEILING
SCALE 3/8" = 1'-0"

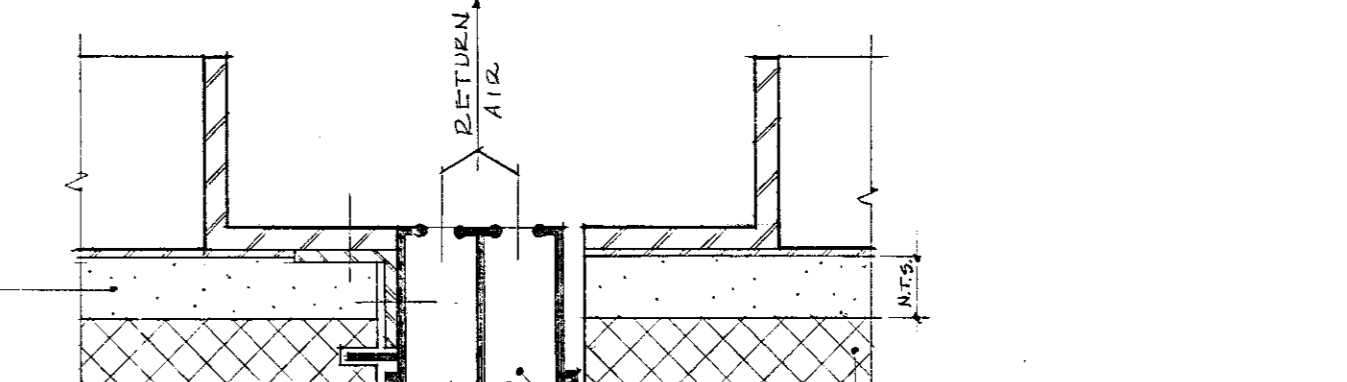


DETAIL - 11
DETAIL - 12
(FOR DOOR DETAIL SEE DWG. 4-49 DET. 38)
SCALE 1/8" = 1'-0"

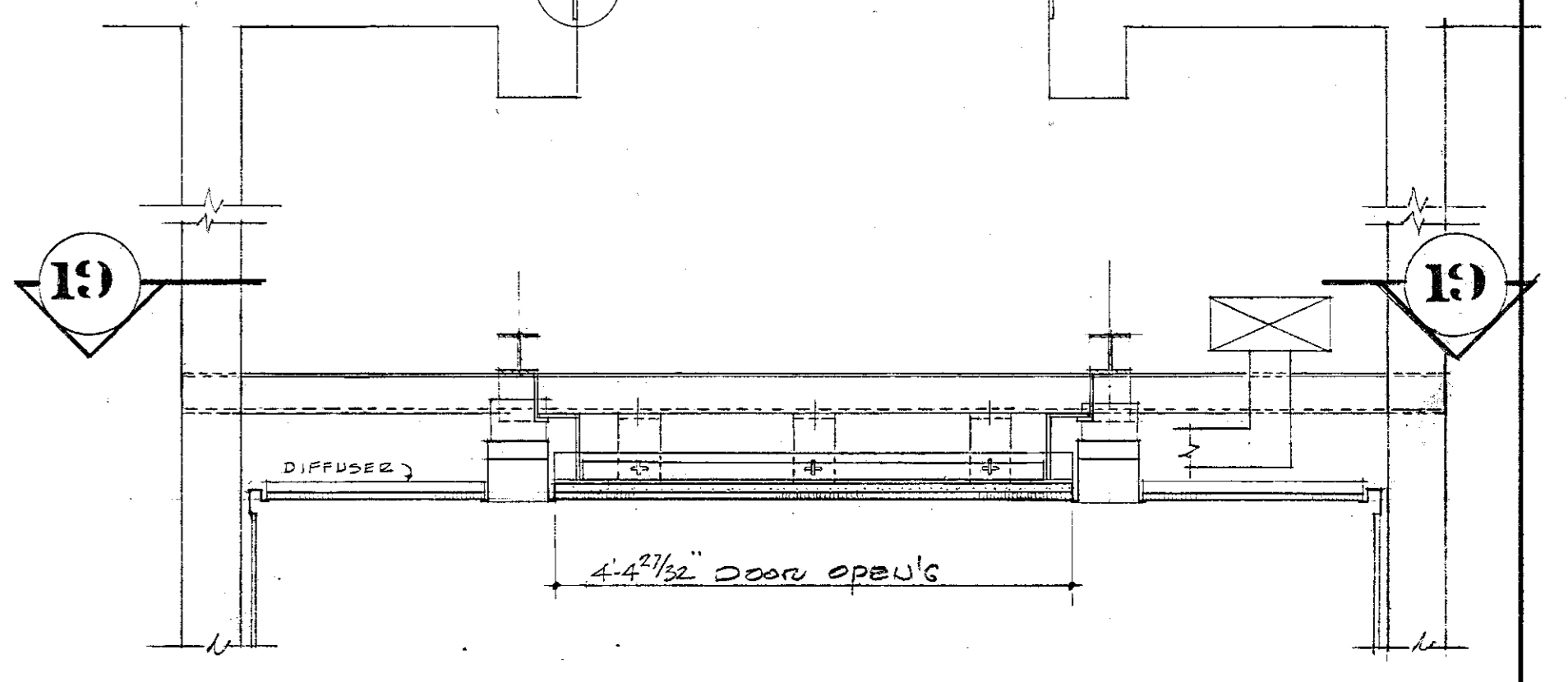


PLAN - 17 HINGE
SCALE 3/8" = 1'-0"

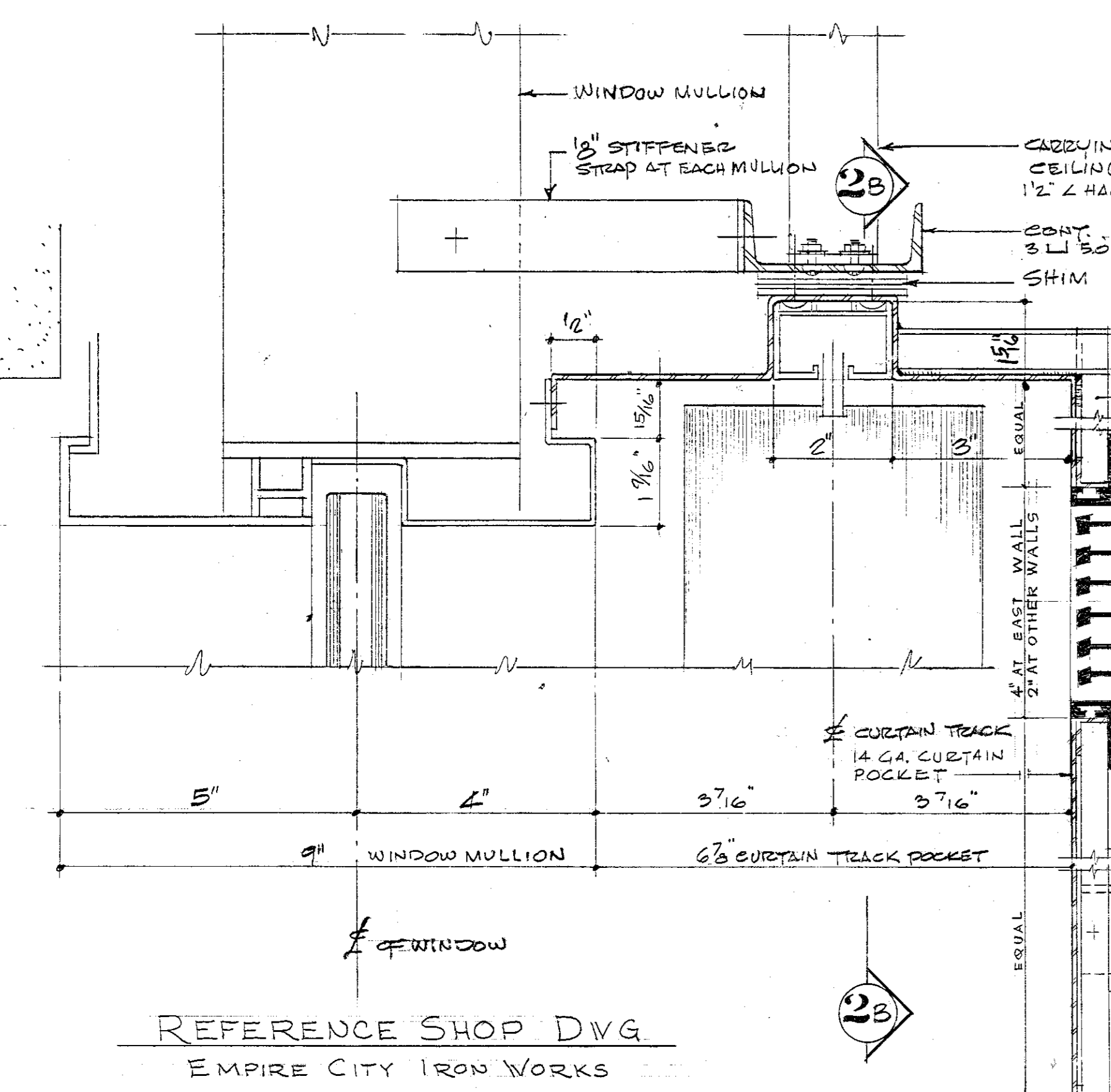
REFERENCE SHOP DWG
EMPIRE CITY IRON WORKS
DWG. NO. 40-TRAP DOORS IN CEILING OF 5th FL. ELEVATOR LOBBYS



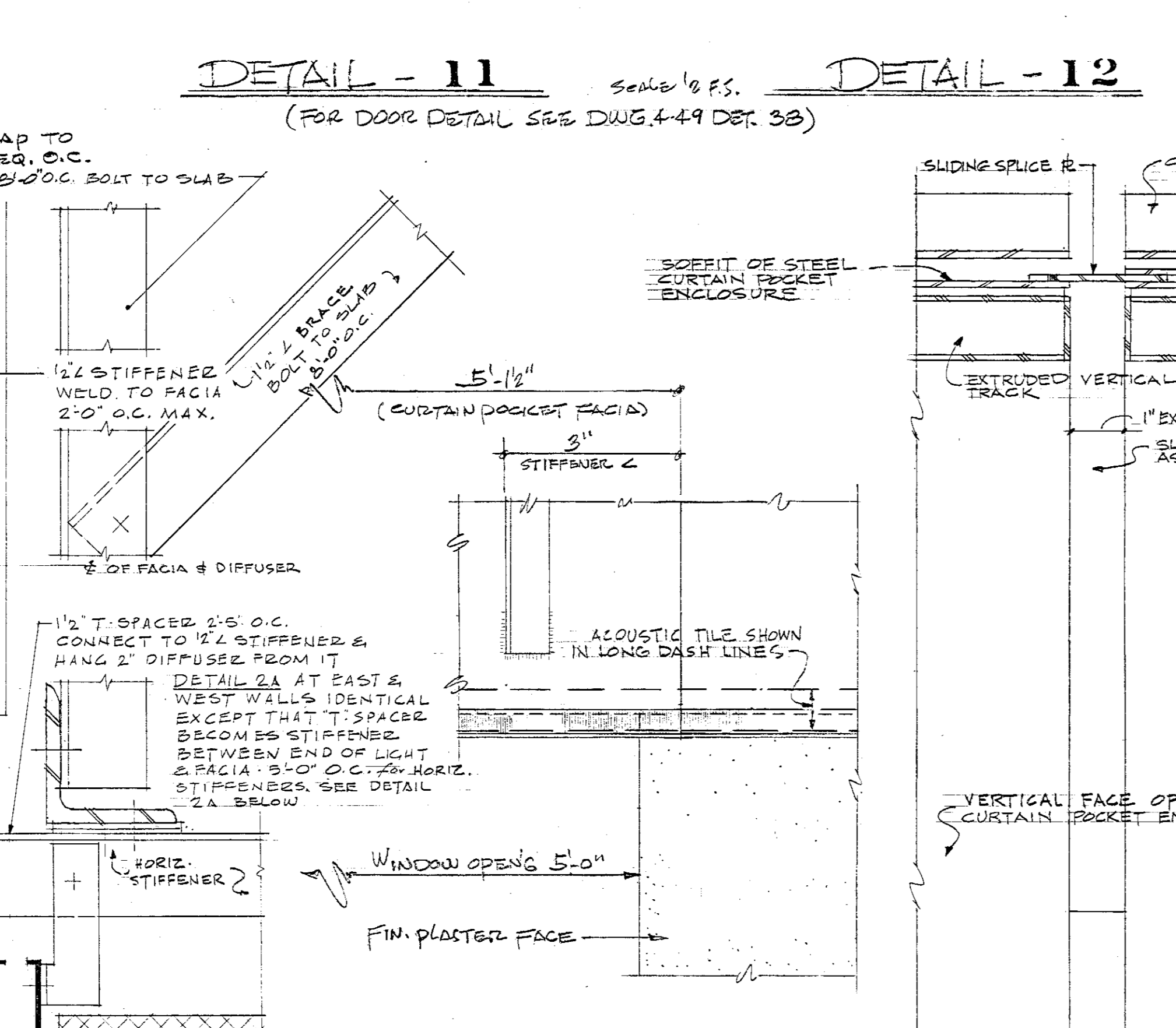
21 DET. of DUMMY DIFFUSER
SCALE 1/2" = 1'-0"



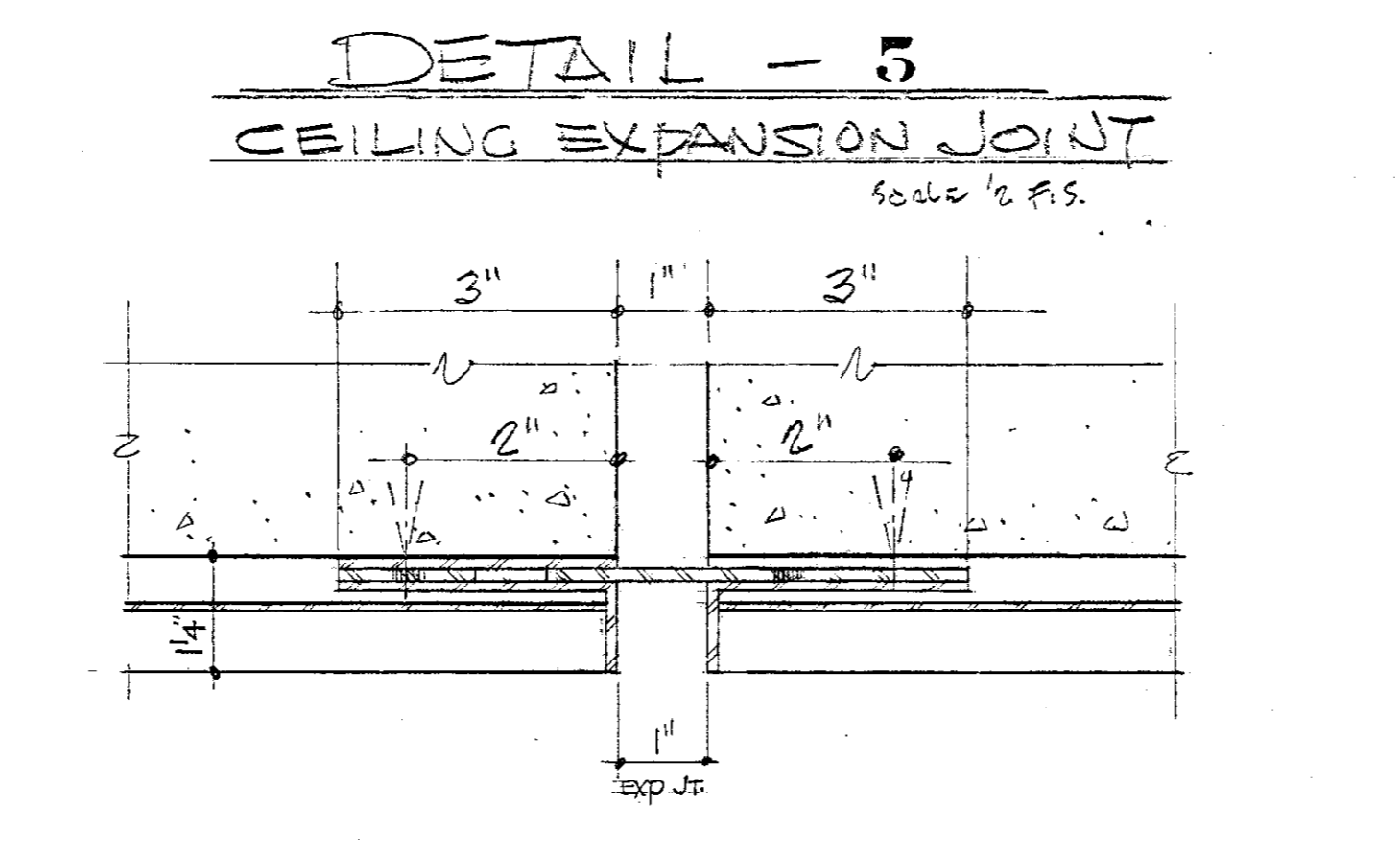
20 NORTH-SOUTH SECTION THRU TRAP DOOR
SCALE 3/8" = 1'-0"



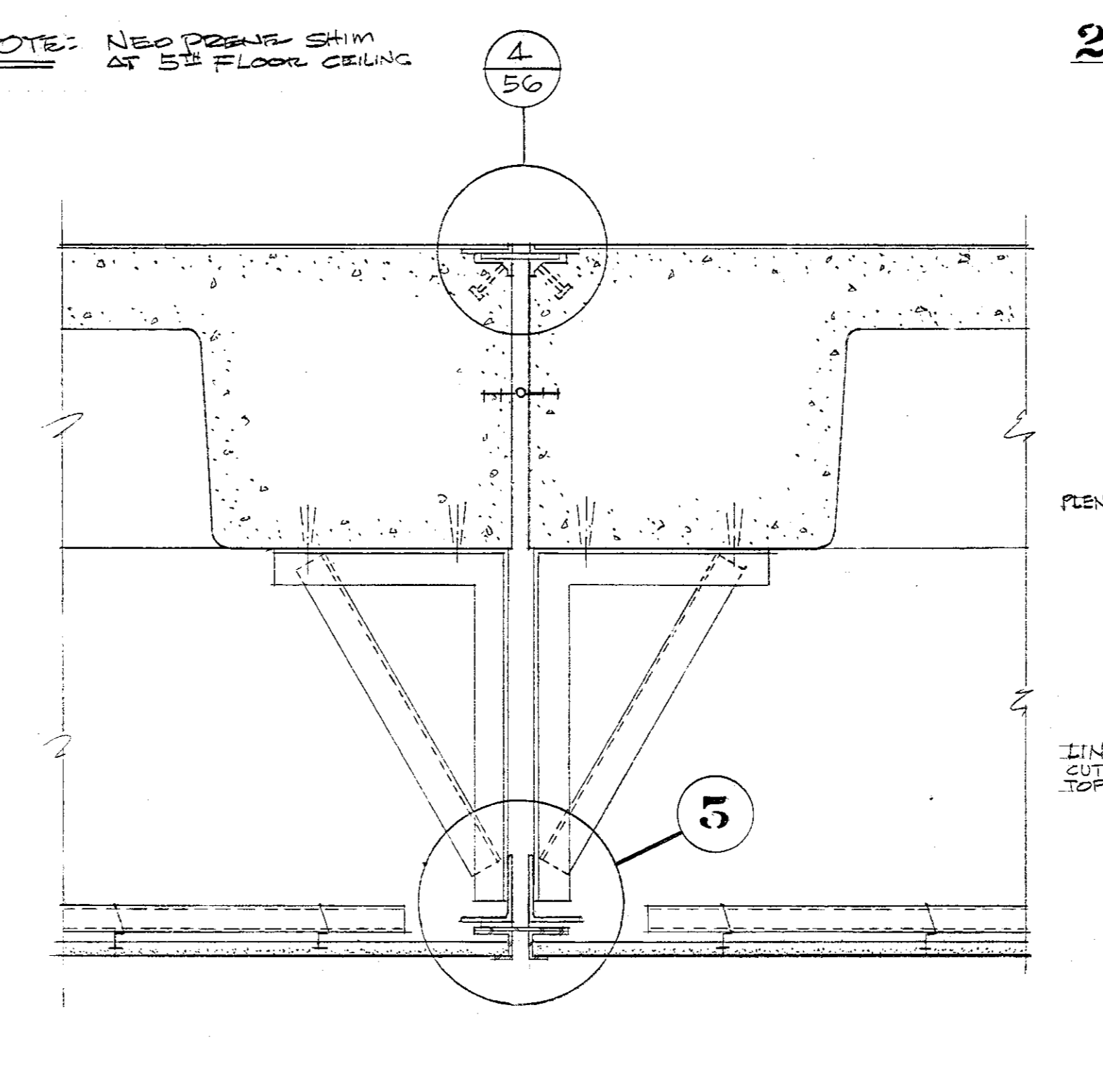
REFERENCE SHOP DWG
EMPIRE CITY IRON WORKS
DWG. NO. 9-CHANNEL SUPPORTS FOR CURTAIN TRACKS



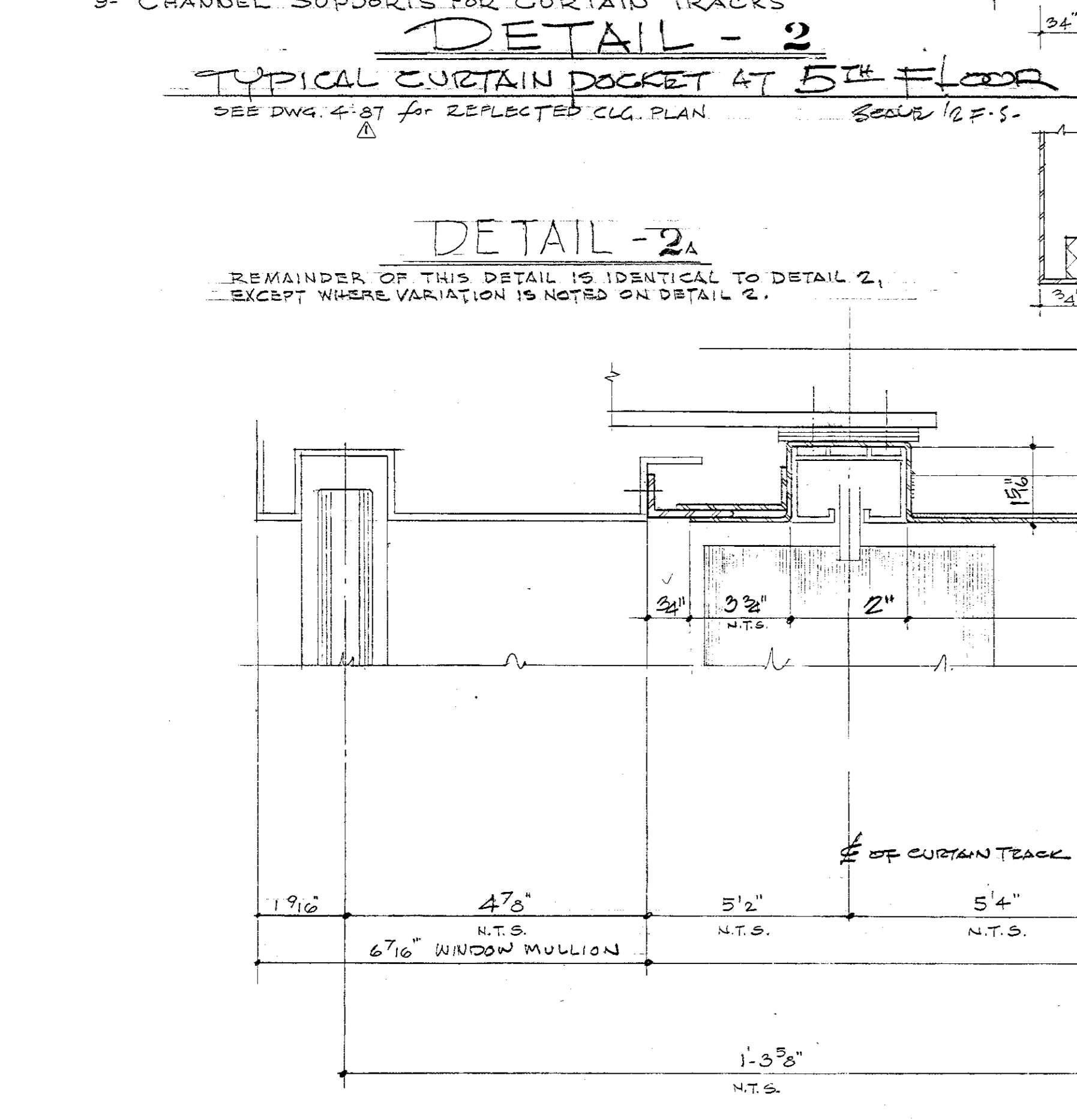
DETAIL - 4
DETAIL 2a
DETAIL - 6-6
SECTION THROUGH CURTAIN POCKET EXPANSION JOINT (SCALE 1/2" = 1'-0")
SCALE 1/2" = 1'-0"



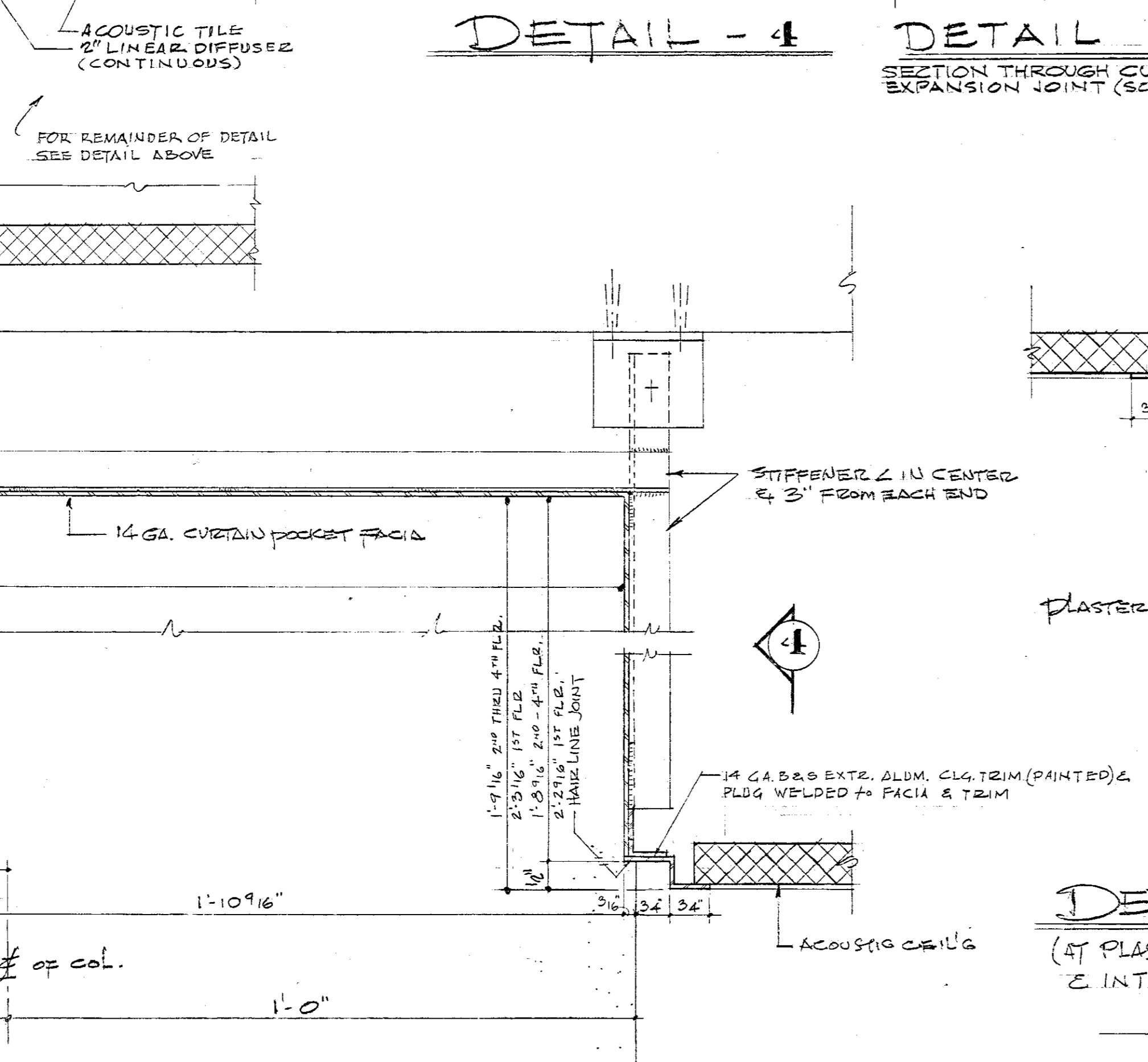
DETAIL - 5
CEILING EXPANSION JOINT
SCALE 1/2" = 1'-0"



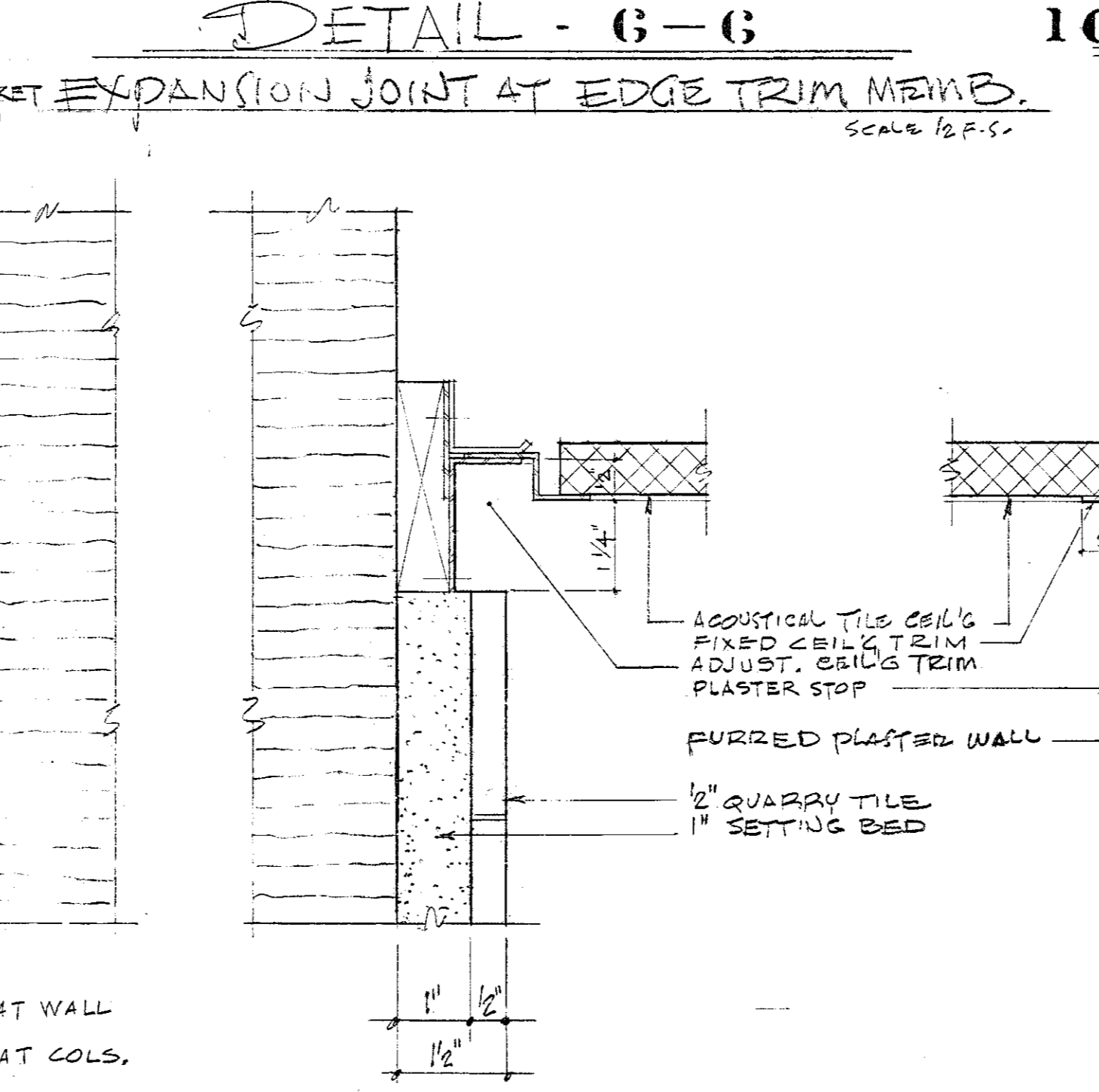
10 SECTION THRU CEILING EXPANSION JOINT
SCALE 1/2" = 1'-0"



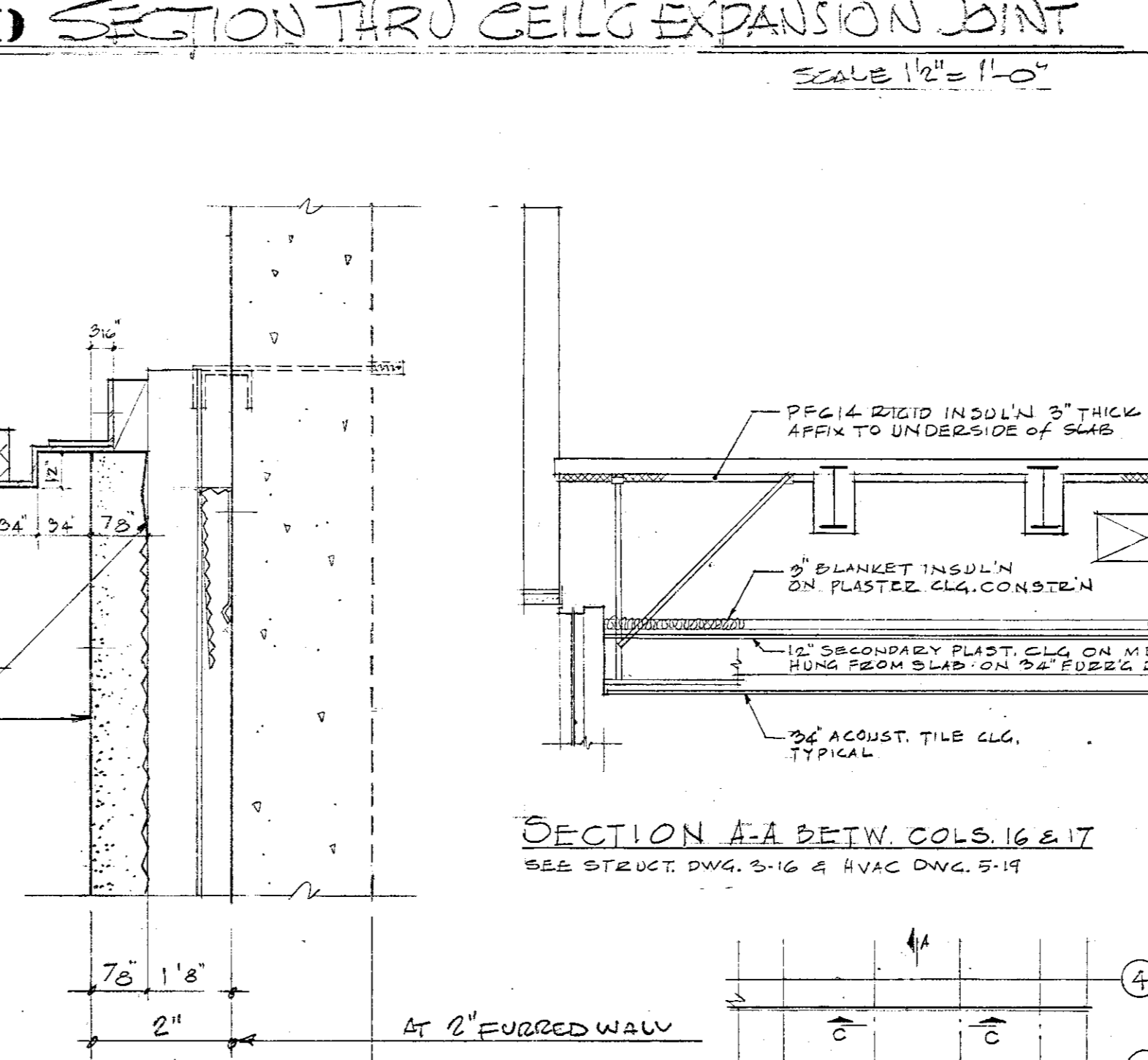
DETAIL - 2
REMAINDER OF THIS DETAIL IS IDENTICAL TO DETAIL 2, EXCEPT WHERE VARIATION IS NOTED ON DETAIL 2.
DETAIL - 3 (TYPICAL CURTAIN POCKET AT 1st FL. THRU 4th FL.)
SCALE 1/8" = 1'-0" SEE DWG. 4-90



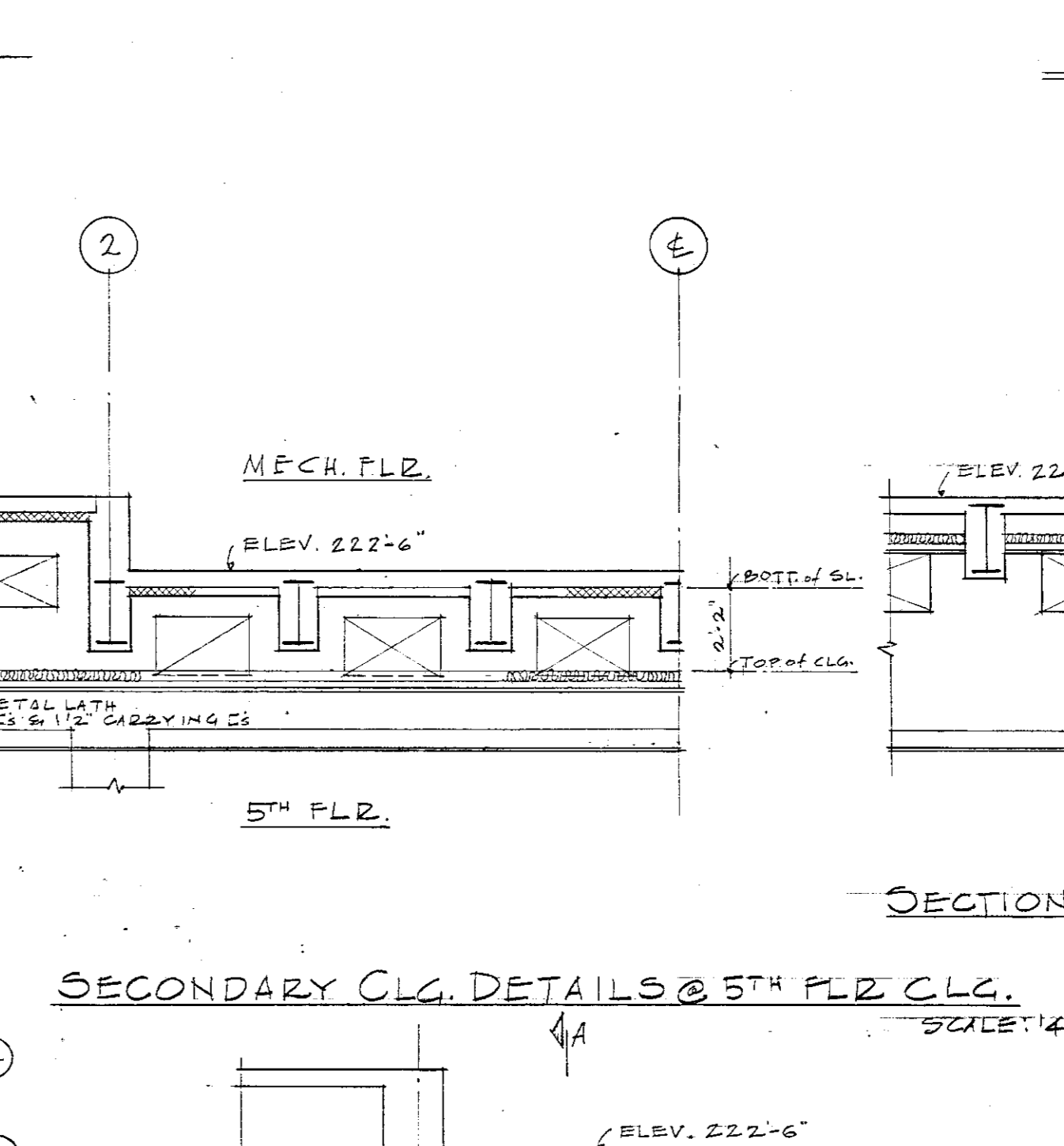
DETAIL - 7
DETAIL - 8
DETAIL - 9
(TYPICAL CEILING TRIM AT WALL)
(AT PLASTER WALL, OPT. & INTERIOR COLS.)
(AT FURRED WALL)
SCALE 1/8" = 1'-0" SEE DWG. 4-90



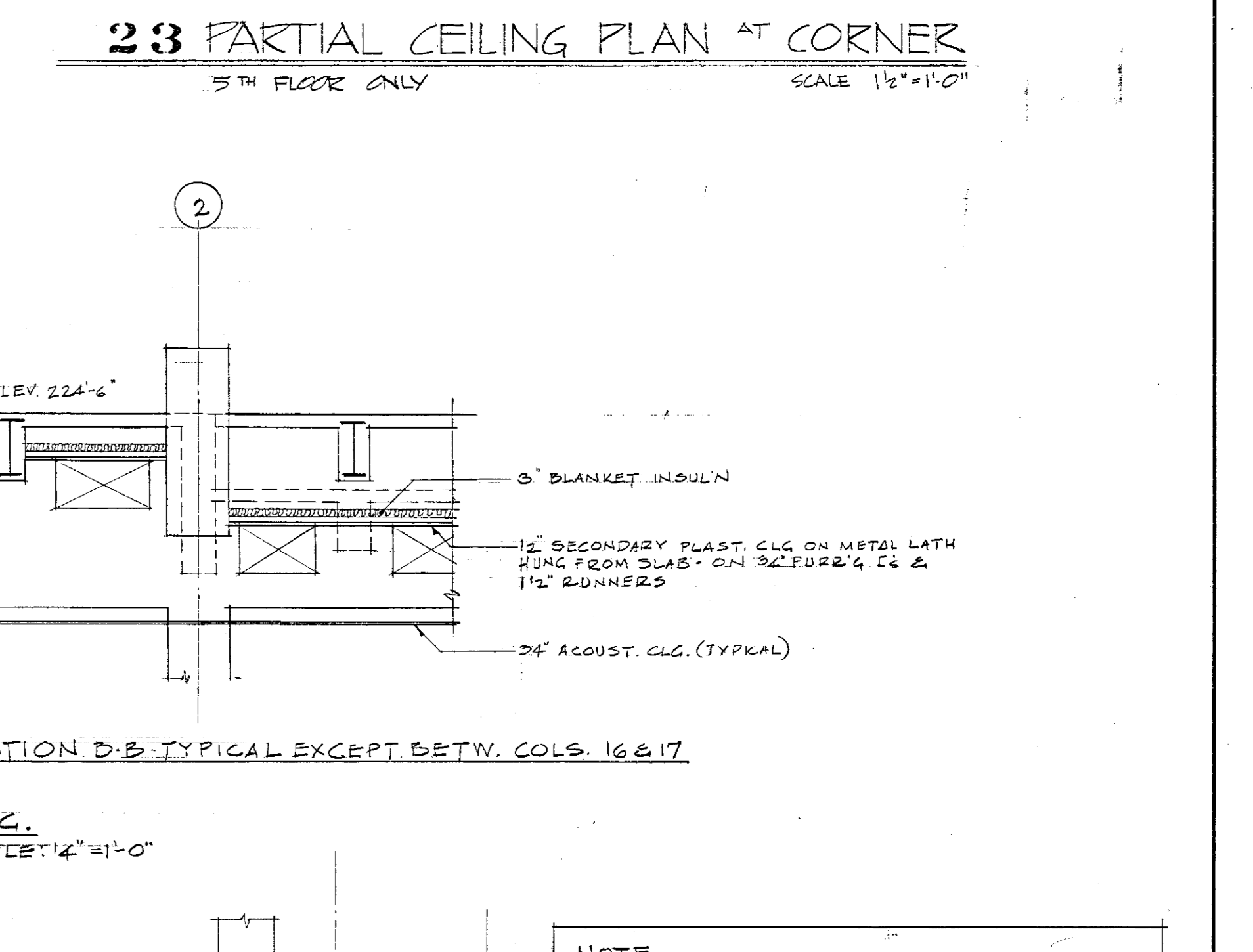
SECTION A-A BETW. COLS. 16 & 17
SEE DWG. 4-91 & 4-92 DWG. 4-91



SECTION B-B TYPICAL EXCEPT BETW. COLS. 16 & 17
SCALE 1/4" = 1'-0"



SECTION C-C
FOR BALANCE OF NOTES, SEE SECTION A-A



23 PARTIAL CEILING PLAN AT CORNER
5th FLOOR ONLY
SCALE 1/8" = 1'-0"

NOTE: SEE DETAILS ON ELEC., HVAC, AND CONVEYOR CONTRACT DWGS.

NOTE: FOR EXISTING WORK N.I.C. SEE FOUNDATION CONTRACT REFERENCE DRAWINGS.

AS-BUILT

ALBANY SOUTH MALL PROJECT
SWAN STREET BUILDING

CARSON, LUNDIN & SHAW ARCHITECTS
425 PARK AVENUE NEW YORK 22, N.Y.

ADDEDNDUM DRAWING 4/19/24 REF-3

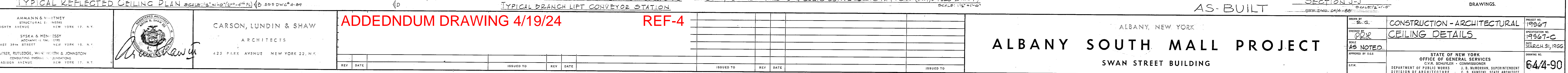
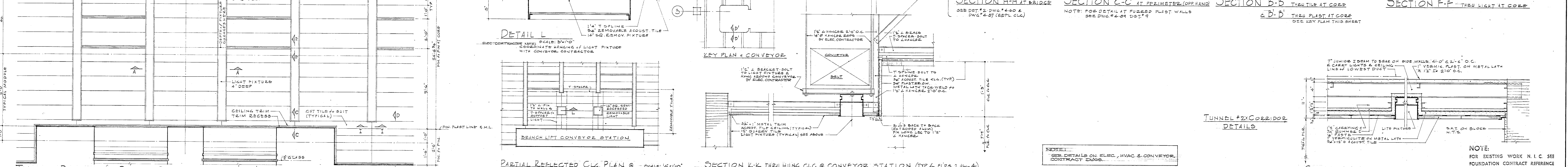
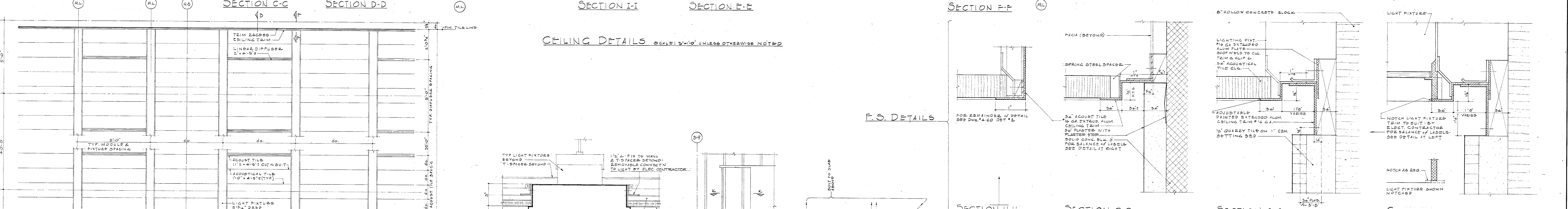
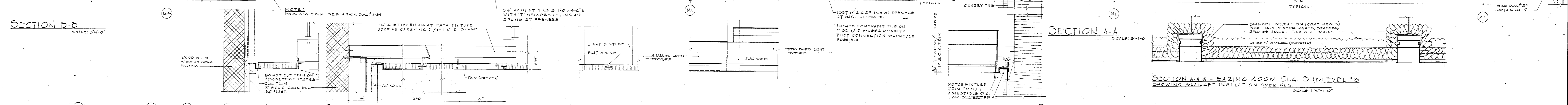
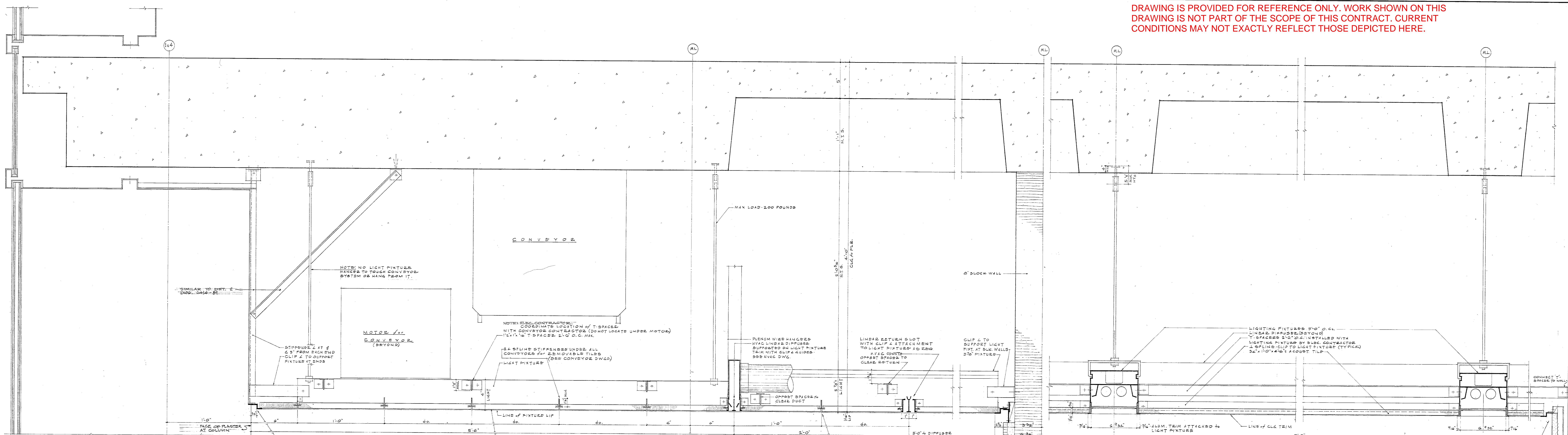
| REV | DATE | ISSUED TO | REV | DATE | ISSUED TO |
|-----|---------|-----------|-----|------|-----------|
| 1 | 4/19/24 | ADDENDUM | | | |

| NO. | DATE | BY | CHKD. | APP'D. |
|-----|---------|----|-------|--------|
| 1 | 4/19/24 | | | |

ALBANY SOUTH MALL PROJECT
SWAN STREET BUILDING

CONSTRUCTION - ARCHITECTURAL
CEILING DETAILS
STATE OF NEW YORK
OFFICE OF GENERAL SERVICES
DIVISION OF ARCHITECTURE
1967
MAR. 31, 1968
64/4-89

DRAWING IS PROVIDED FOR REFERENCE ONLY. WORK SHOWN ON THIS DRAWING IS NOT PART OF THE SCOPE OF THIS CONTRACT. CURRENT CONDITIONS MAY NOT EXACTLY REFLECT THOSE DEPICTED HERE.



ALBANY, NEW YORK
111 EAST AVENUE
NEW YORK 19, N.Y.
STRA & MEN: TSPY
ARCHITECTS
141 EAST 39th STREET
NEW YORK 18, N.Y.
MUNSER, RUTLEDGE, WILKINSON & JOHNSON
CONSULTING ARCHITECTS
415 MADISON AVENUE
NEW YORK 17, N.Y.

CARSON, LUNDIN & SHAW
ARCHITECTS
423 PARK AVENUE
NEW YORK 22, N.Y.

ADDEDNDUM DRAWING 4/19/24 REF-4

| REV | DATE | ISSUED TO | REV | DATE | ISSUED TO |
|-----|------|-----------|-----|------|-----------|
| | | | | | |

ALBANY, NEW YORK
ALBANY SOUTH MALL PROJECT
SWAN STREET BUILDING

CONSTRUCTION - ARCHITECTURAL
CEILING DETAILS
STATE OF NEW YORK
OFFICE OF GENERAL SERVICES
PUBLIC WORKS
DIVISION OF ARCHITECTURE

DATE: 1956-7
PROFESSIONAL NO.: 19567-C
DATE: MARCH 31, 1956
DRAWING NO.: 64-4-90